

BILL OF MATERIAL

NOTE: ITEM No. = FIRST TWO DIGITS (DWG REF.), LAST TWO DIGITS (item No.)

CUST TAG	ITEM	PART NO.	QTY.	DESCRIPTION
	500	808048	1	VALVE, BALL, 4"-150CL RF, FP, LH, NACE, A350-LF2 BODY, WKM (B110-CS3-42-S1-BS)
	501	808043	1	BLEED RING, 4"-150CL RF, 1-1/2 THK., C/W 3/4" SW TAP, SA516-70N
PT-5608	513	808054	2	GAUGE PRESSURE TRANSMITTER, ROSEMOUNT 2051T, 0 TO 150 PSI
PT-5621				4-20mA DC HART PROTOCOL, 316L SST, 1/2 FNPT, XP, ROSEMOUNT (2051TG2A2B21B4K5)
	514	808098	1	VALVE, BALL, 1-1/2"-150CL, DB&B, 3PC, 2 CENTER SECTIONS, 2 ENDS, BLOCK W/ 1/2" NPT BALL BLEED WELDED TO BLOCK, CF8M, J-FLOW (DB-DM4633FTMTMF1.5-150)
	515	808099	3	VALVE, BALL, 2"-150CL, DB&B, 3PC, 2 CENTER SECTIONS, 2 ENDS, BLOCK W/ 1/2" NPT BALL BLEED WELDED TO BLOCK, CF8M, J-FLOW (DB-DM4633FTMTMF2-150)
	516	808097	2	VALVE, BALL, 1"-150CL, DB&B, 3PC, 2 CENTER SECTIONS, 2 ENDS, BLOCK W/ 1/2" NPT BALL BLEED WELDED TO BLOCK, CF8M, J-FLOW (DB-DM4633FTMTMF1-150)
PSV-5604	517	808089-80	1	VALVE, RELIEF, LESER, 1"-150RF X 2"-150RF, "E" ORIFICE, NACE, SET @ 80PSIG, 316 SST TRIM, SA352-LCB CS BODY & BONNET HIGH TEMP. ALLOY STEEL SPRING, BALANCED BELLOWS, LESER (5263.5052-H64H79J8L44H03N68N78H01) S/N: 10993431
SDV/SDY-5601	518	808053	1	VALVE, BALL, 4"-150CL RF, FP, LF2 BODY, 316 SST TRIM, NACE, WKM (B110-CS3-42-S1), EL-O-MATIC (ES0950.U2A04A.S36KLO) ACTUATOR, FAIL CLOSE, C/W MTG KIT, TOPWORX (DXP-L21GNEB) POSITION MONITOR, ASCO (EFB320G202) SOLENOID VALVE, FISHER 67CFR REGULATOR
PSV-5603	520	808020-80	1	VALVE, RELIEF, LESER, 1-1/2"-150RF X 2"-150RF, "F" ORIFICE, NACE, SET @ 80PSIG, 316 SST TRIM, SA352-LCB CS BODY & BONNET HIGH TEMP. ALLOY STEEL SPRING, BALANCED BELLOWS, LESER (5263.5102-H64H79J8L44H03N68N78H01) S/N: 10993436
PSV-5613	530	808021-150	1	VALVE, RELIEF, LESER, 1-1/2"-150RF X 2"-150RF, "E" ORIFICE, NACE, SET @ 150PSIG, 316 SST TRIM, SA352-LCB CS BODY & BONNET HIGH TEMP. ALLOY STEEL SPRING, BALANCED BELLOWS, LESER (5263.5052-H64H79J8L44H03N68N78H01) S/N: 10993420 TBA
SDV/SDY-5611	534	808031	1	VALVE, BALL, 3"-150CL RF, FP, LF2 BODY, 316 SST TRIM, NACE, WKM (B110-CS3-42-S2), EL-O-MATIC (ES0200.U2A04A.S22KLO) ACTUATOR, FAIL CLOSE, C/W MTG KIT, TOPWORX (DXP-L21GNEB) POSITION MONITOR, ASCO (EFB320G202) SOLENOID VALVE, FISHER 67CFR REGULATOR
PI-5610	555	808198	1	GAUGE, PRESSURE, 0-300PSIG, 4-1/2" DIAL, 1/2" MNPT BTM MOUNT, SILICON FILLED PHENOLIC CASE, 316SS INTERNALS, WIKA (9837904)
	556	808221	3	GAUGE VALVE, MULTI-PORT, 3/16" ORIFICE, 6000#, NACE, TEFLON PACKED 3/4" MNPT X (3) 1/2" FNPT, 316SS ANDERSON GREENWOOD (MSVIS-46-SG)
	561	808046	2	VALVE, BALL, 3"-150CL RF, FP, LH, NACE, A350-LF2 BODY, WKM (B110-CS3-42-S2-WR)
	562	808042	1	BLEED RING, 3"-150CL RF, 1-1/2 THK., C/W 3/4" SW TAP, SA516-70N
	564	808041	7	BLEED RING, 2"-150CL RF, 1-1/2 THK., C/W 3/4" SW TAP, SA516-70N
	565	808133	3	VALVE, CHECK, SWING, 2"-150CL RF, NACE, LCC, BONNEY FORGE (2"-1-60-FR LCC/316)
	566	808136	1	VALVE, CHECK, AXIAL FLOW, 2"-150CL RF, NACE, LOW TEMP., DPT (WLC-9003X)
	569	808050	1	VALVE, GLOBE, 2"-150CL RF, NACE, TRIM 12, LCC, BONNEY FORGE (2"-1-30-RF-LCC/316)
PCV/DVC-5612	573	808012	1	VALVE, CONTROL, 2"-150CL RF, LCC LOW TEMP., 0-33 PSI OP. RANGE, FAIL OPEN, 3/4" TRIM, NACE, FISHER D4, C/W FISHER 67CFR & DVC6200
BDV/BDY-5603/5613	580	808030	2	VALVE, BALL, 2"-150CL RF, FP, LF2 BODY, 316 SST TRIM, NACE, WKM (B110-CS3-42-S2), EL-O-MATIC (ES0200.U2D04A.S22KLO) ACTUATOR, FAIL OPEN, ASCO (EFB320G202) SOLENOID VALVE, FISHER 67CFR REG.
	581	808045	8	VALVE, BALL, 2"-150CL RF, RP, LH, NACE, A350-LF2 BODY, PBV (C5410-31-2836-FT-NL)
	585	808244	5	VALVE, NEEDLE, 1/4" FNPT, 6000#, 316SS, NACE, ANDERSON (H7VIS-2-SG)
	589	SEE SPOOL	1	GATE VALVE 1" 800 SW A350-LF2 TRIM 12 NACE/LT BB HANDWHEEL OP BONNEY FORGE # HL-1L35
	590	SEE SPOOL	22	VALVE, GATE, 3/4"-800# SW/NPT, RP, HANDWHEEL, NACE TRIM, A350 GR-LF2, VELAN (C04-2054B-26NB)
	591	SEE SPOOL	4	VALVE, GATE, 1/2"-800# SW/NPT, HANDWHEEL, NACE TRIM, A350 GR-LF2, VELAN (C03-2054B-26NB)
TE/TW-5620,03,05	592	808027	5	TEMPERATURE SENSOR, THERMOCOUPLE, -180 TO 371°C, STD 3" EXTENSION, SST, XP, ROSEMOUNT (0183D22T2A30A030T265R21)
5612,15				C/W THERMOWELL, 316 SST, 3" IMMERSION LENGTH, 3/4" NPT
TE/TW-5613,21,23	593	808206	3	TEMPERATURE SENSOR, THERMOCOUPLE, -180 TO 371°C, STD 3" EXTENSION, SST, XP, ROSEMOUNT (0183D22T2A30A025T34E5R21)
				C/W THERMOWELL, 316 SST, 2-1/2" IMMERSION LENGTH, 3/4" NPT
TI-5609	594	808137	4	GAUGE, TEMP, 0-250°F, 5" DIAL, 1/2" NPT, ADJ. ANGLE, 2-1/2" STEM, BI-METAL HELIX, HERMETICALLY SEALED, 304SS, WIKA MODEL 52
TW-5609	595	808476	4	THERMOWELL, 3/4" X 1/2" NPT, 0.260" BORE, 2-1/2" TAPERED STEM, 1-5/8" U, 316SS

CUSTOMER CONNECTIONS

TAG	DESCRIPTION	SIZE/(VOLTAGE)
A	SUCTION INLET	4"-150CL RF
B	FINAL DISCHARGE	2"-150CL RF
C	LOW PRESSURE VENT HEADER	3"-150CL RF
D	FINAL DRAIN HEADER OUTLET	2"-150CL RF
E	INSTRUMENT AIR (120-150 PSIG SUPPLY)	2"-150CL RF
F	PRODUCED LIQUIDS FROM COMPRESSOR MODULE 97	2"-150CL RF
G	PRODUCED LIQUIDS FROM COMPRESSOR MODULE 98	2"-150CL RF
H	SUMP DRAIN LIQUID	2"-150CL RF

- GENERAL NOTES**
- ALL PRESSURE VESSELS ARE DESIGNED, FABRICATED AND TESTED IN ACCORDANCE WITH ASME SECTION VIII, DIV.1. C.A. = 1/8" NDE = RT-1 PWHT = YES RATED FOR FULL VACUUM
 - ALL PIPING DESIGNED, FABRICATED AND TESTED IN ACCORDANCE WITH ASME B31.3. C.A. = 1/8" NDE = 100% PWHT = NONE
 - ALL VESSEL AND PIPE FITTING MATERIALS TO BE RATED FOR -50°F LOW TEMPERATURE USE.
 - PROCESS INSTRUMENT LINES: 316SS 0.035" WALL FOR 1/4" TUBING 316SS 0.048" WALL FOR 3/8" TUBING 316SS 0.085" WALL FOR 1/2" TUBING C/W SWAGelok 316SS FITTINGS w/ 316SS BACK / FRONT FERRULES UNLESS OTHERWISE NOTED
 - UTILITY INSTRUMENT LINES: 316SS 0.035" WALL FOR 1/4" TUBING 316SS 0.048" WALL FOR 3/8" TUBING 316SS 0.085" WALL FOR 1/2" TUBING C/W SWAGelok 316SS FITTINGS w/ 316SS BACK / FRONT FERRULES UNLESS OTHERWISE NOTED
 - INSTRUMENT MEDIUM: CLEAN, DRY AIR
 - PROCESS HARDWARE: STUDS: BTM NUTS: 2H4 GASKETS: PER BRP SPECIFICATION SPC-PP-00-0006, FLEXITALLIC 304SS/GRAFOIL FILLER, 304SS INNER RING, CARBON STEEL OUTER (CENTERING) RING, FLEDCARB CGI, LOW SEATING SURFACE PREPARATION: SSPC-SP2 FINISH: CUMBERLAND SERIES 74, F34 WARM GREY ENAMEL
 - SWEET SERVICE (DESIGNED FOR 2% SOUR) SURFACE PREPARATION: SSPC-SP2 FINISH: CUMBERLAND SERIES 74, F34 WARM GREY ENAMEL
 - PIPE MARKERS ARE TO BE FIXED TO PIPING IN CLEARLY VISIBLE LOCATIONS TO INDICATE FLOW DIRECTION.
 - STAINLESS STEEL INSTRUMENT TAGS TO BE PROVIDED AND ATTACHED TO EACH PIECE OF INSTRUMENTATION EQUIPMENT.
 - LOCTITE 567 TO BE USED FOR ALL THREADED ASSEMBLIES.
 - INSULATING GASKETS/FLANGE KITS SHALL BE USED AT ALL CARBON STEEL TO STAINLESS STEEL FLANGE CONNECTIONS.

STAMP AREA

AS BUILT

By: *[Signature]*

DATE: 12/14/15

THIS DOCUMENT IS SUPPLIED IN CONFIDENCE. REPRODUCTION OR DISTRIBUTION IN WHOLE OR PART WITHOUT THE WRITTEN PERMISSION OF NCG COMPRESSION SOLUTIONS IS STRICTLY PROHIBITED.

REV.	BY	CHK'D	REVISION DESCRIPTION	DATE
3	KMB	KDM	AS BUILT	10/30/15
2	ATE	KDM	ROTATE GV-590, CHG TW-595 P/N WAS 808432	08/27/15
1	ATE	KDM	REVISED BOM CUSTOMER ITEM TAGS	07/07/15
0	ATE	KDM	ISSUED FOR FABRICATION	06/01/15
B	ATE	KDM	ISSUED FOR ASRC MARKUPS DATED 03/18/15	04/23/15
A	ATE	KDM	ISSUED FOR APPROVAL	03/06/15

NCG COMPRESSION SOLUTIONS

TITLE: **PROCESS FLOW DIAGRAM**

2 STAGE, RO-FLO 80E / 210M; 200HP TEFC; AXH 42EF
2% SOUR NATURAL GAS COMPRESSOR PACKAGE

END USER/CONSULTANT:	CUST. P.O. No.:
BROOKS RANGE PETROLEUM	MOC1100702359465

LOCATION:	REVISION:
MUSTANG PAD PRUDHOE BAY, ALASKA	3

DRAWN BY:	W.D. No.:	DWG. No.:
ATE	17095-NC	PI-56-0001/2/3-01

DATE:	NO. RECD:	SCALE:
02/09/15	56	NTS

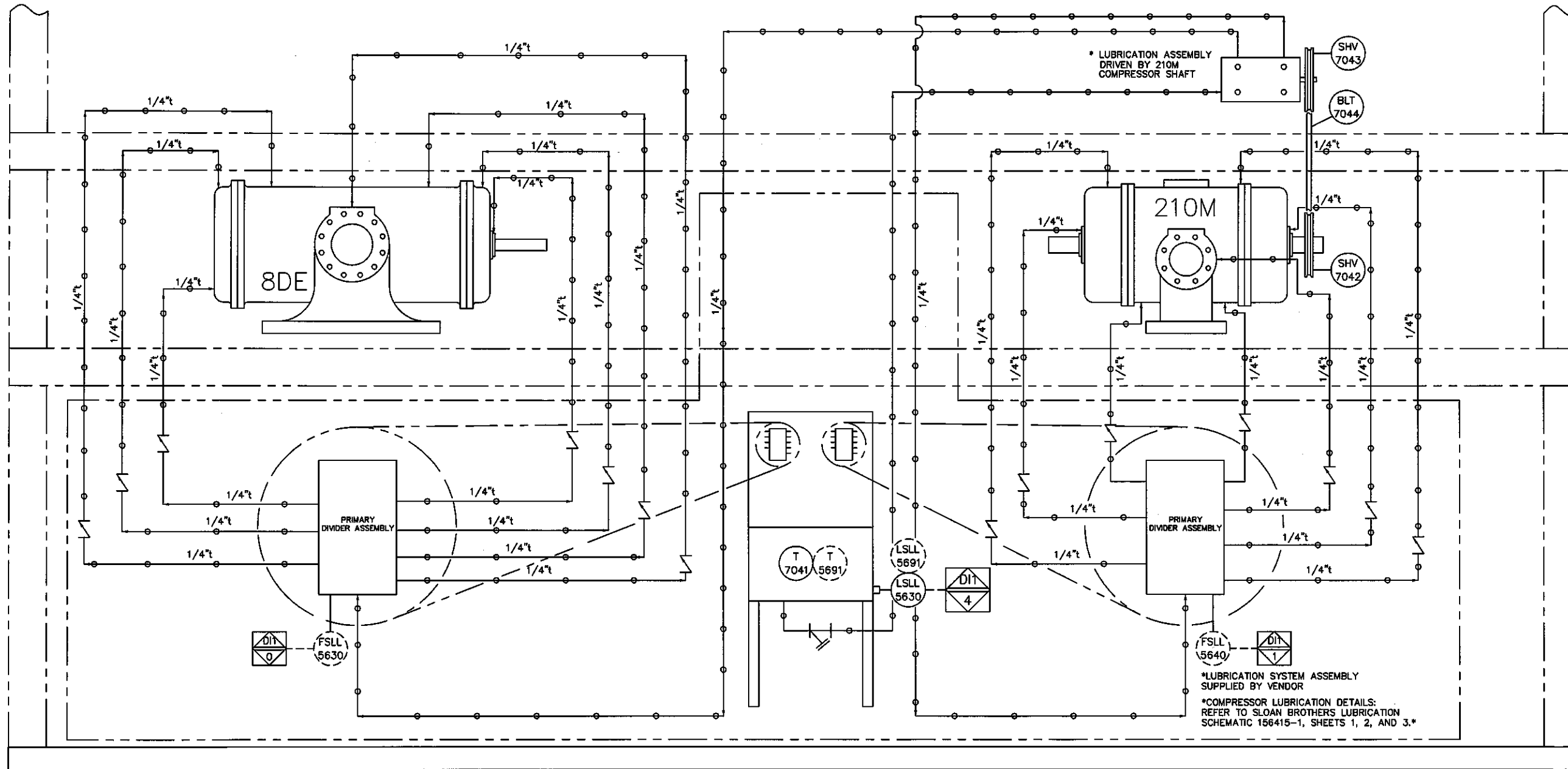
DWG. No. 17095-05A

T-7041/T-5691
 SLOAN BROTHERS LUBRICATION SYSTEM
 C/W 15 GALLON STEEL TANK

BILL OF MATERIAL

NOTE: ITEM No. = FIRST TWO DIGITS (DWG REF.), LAST TWO DIGITS (Item No.)

CUST TAG	ITEM	PART NO.	QTY.	DESCRIPTION
T-5691	7041	807992	1	LUBRICATION SYSTEM, COMPLETE FOR ROFLO 8DE-210M RO-FLO
				GAS COMPRESSOR, C/W SHEAVES, SLOAN BROTHERS (54119-1)
	7042	C/W 807992	1	ROFLO DRIVE SHEAVE 4" x 2-5/8" ID FOR 210M SHAFT
	7043	C/W 807992	1	LUBRICATOR DRIVEN SHEAVE, 3" PULLEY WITH 5/8" BORE
	7044	808002	1.5 MTR	V-BELT, LINK, SECTION SIZE: A, TOP WIDTH: 1/2", CONSTRUCTION: V-RIBBED, POLYESTER, POLYURETHANE, FENNER DRIVES (L01A20)



CUSTOMER CONNECTIONS

GENERAL NOTES

- ALL PIPE FITTING MATERIALS TO BE RATED FOR -50°F LOW TEMPERATURE USE.
- UTILITY INSTRUMENT LINES: (BY NCC)
 - 316SS 0.035" WALL FOR 1/4" TUBING
 - 316SS 0.049" WALL FOR 3/8" TUBING
 - 316SS 0.065" WALL FOR 1/2" TUBING
 - c/w SWAGelok 316SS FITTINGS w/ 316SS
 - BACK / FRONT FERRULES UNLESS OTHERWISE NOTED
- UTILITY INSTRUMENT LINES: (AS PROVIDED BY SLOAN BROTHERS)
 - 316SS 0.035" WALL FOR 1/4" TUBING
 - c/w PARKER STEEL FITTINGS w/ 316SS
 - BACK / FRONT FERRULES UNLESS OTHERWISE NOTED
- INSTRUMENT MEDIUM: CLEAN, DRY AIR
- FINISH AND PAINTING REQUIREMENTS:
 - SURFACE PREPARATION: SSPC-SP2
 - PAINT: CLOVERDALE SERIES 74, F34 WARM GREY ENAMEL
- STAINLESS STEEL INSTRUMENT TAGS TO BE PROVIDED AND ATTACHED TO EACH PIECE OF INSTRUMENTATION EQUIPMENT.
- LOCTITE 567 TO BE USED FOR ALL THREADED ASSEMBLIES.

STAMP AREA

AS BUILT
 BY: *[Signature]*
 DATE: 12/14/15



TITLE: COMPRESSOR LUBRICATION SCHEMATIC
 2 STAGE, RO-FLO 8DE / 210M; 200HP TEFC; AXH 42EF
 2% SOUR NATURAL GAS COMPRESSOR PACKAGE

THIS DOCUMENT IS SUPPLIED IN CONFIDENCE. REPRODUCTION OR DISTRIBUTION IN WHOLE OR PART WITHOUT THE WRITTEN PERMISSION OF NCC COMPRESSION SOLUTIONS IS STRICTLY PROHIBITED.

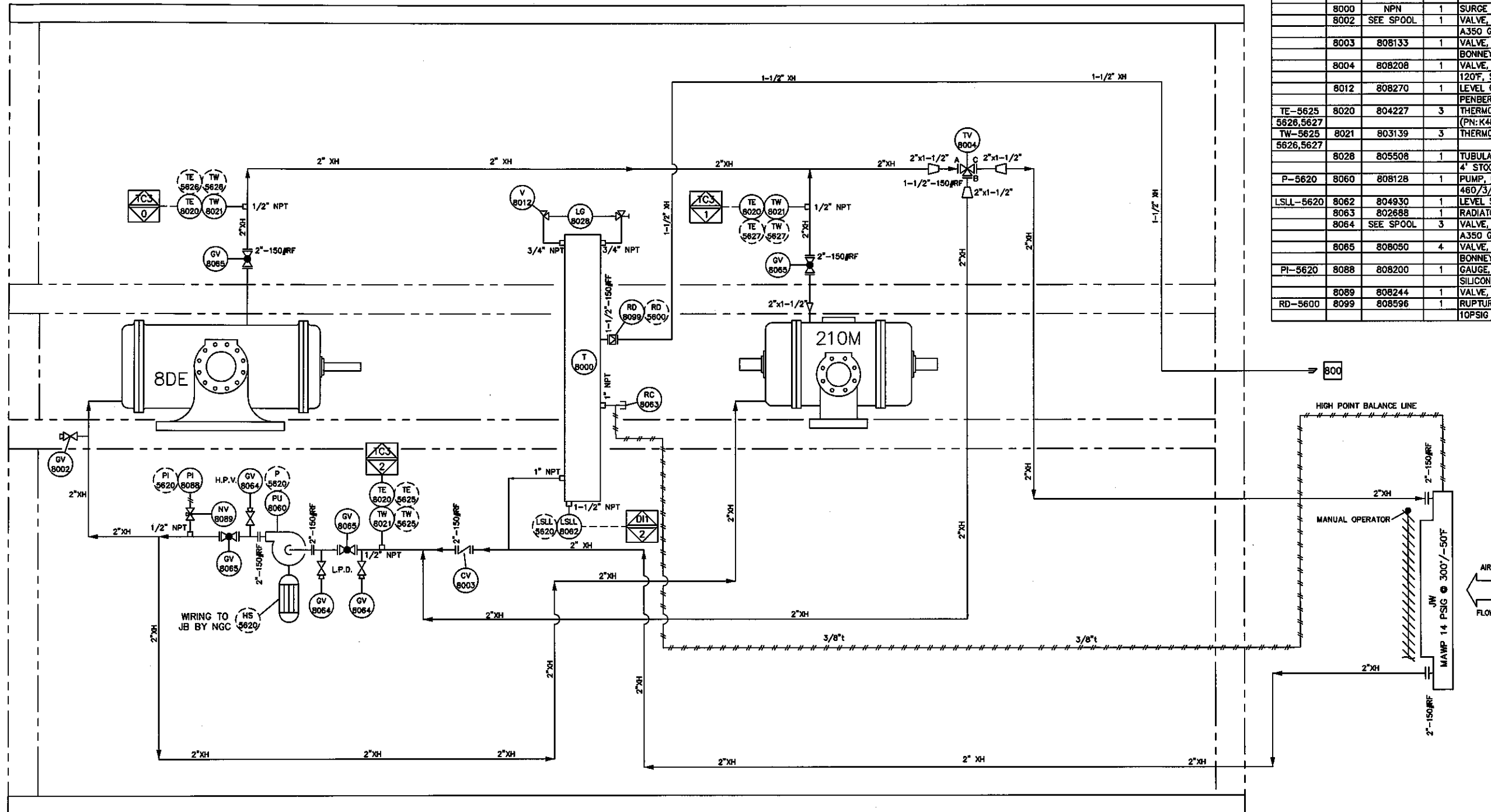
REV.	BY	CHK'D	REVISION DESCRIPTION	DATE	PROJ. MGR.	KDM	SCALE	NTS
2	KMB	KDM	AS BUILT	10/30/15				
1	ATE	KDM	REVISED CUSTOMER ITEM TAGS	07/07/15				
0	ATE	KDM	ISSUED FOR FABRICATION	06/01/15				
B	ATE	KDM	REVISIONS PER ASRC MARKUPS DATED 03/18/15	04/23/15				
A	ATE	KDM	ISSUED FOR APPROVAL	03/06/15				

END USER/CONSULTANT: BROOKS RANGE PETROLEUM	CUST. P.O. No.: MOC1100702359465
LOCATION: MUSTANG PAD PRUDHOE BAY, ALASKA	REVISION: 2
MO. No.: 17095-NC	DWG. No.: PI-56-0012-01
No. REQD: 1	
SCALE: NTS	17095-70B

BILL OF MATERIAL

NOTE: ITEM No. = FIRST TWO DIGITS (DWG REF.), LAST TWO DIGITS (Item No.)

CUST TAG	ITEM	PART NO.	QTY.	DESCRIPTION
	8000	NPN	1	SURGE TANK, ONE COMPARTMENT, 37 GAL, W/LSL
	8002	SEE SPOOL	1	VALVE, GATE, 3/4"-800# SW/NPT, RP, HANDWHEEL, NACE TRIM, A350 GR-LF2, VELAN (C04-2054B-26NB)
	8003	808133	1	VALVE, CHECK, SWNG, 2"-150CL RF, NACE, LCC.
	8004	808208	1	BONNEY FORGE (2"-1-60-FR LCC/316)
	8012	808270	1	VALVE, 3 WAY THERMOSTATIC CONTROL, 1-1/2"-150CL RF, BUNA O-RINGS 120F, STEEL, ANOT (1.5CFSJ12001)
	8012	808270	1	LEVEL GAUGE, VALVE SET, 3/4" NPTM, 3/4" TUBULAR GLASS, 316SS, PENBERTHY N7B (64250-020)
TE-5625	8020	804227	3	THERMOCOUPLE, 6" PROBE, "K" TYPE, 30' LEAD
5626,5627				(PN:K48G-006-00-18-F38360-2)
TW-5625	8021	803139	3	THERMOWELL, 1/2" X 1/2" NPT, 2-1/2" U, 0.260 BORE, 316SS
5626,5627				
	8028	805508	1	TUBULAR SIGHT GLASS FOR LEVEL GAUGE, 3/4" DIA X 4" STOCK LENGTH, REDLINE
P-5620	8060	808128	1	PUMP, GEAR, 2"-150CLFF, SS CONST, PSV, VITON SEAL, 1HP, 1750RPM, 460/3/60, GE G841 XP MOTOR, TUTHILL (GG030SAVMEIDID000)
LSLL-5620	8062	804930	1	LEVEL SWITCH, 1-1/2" NPT, XP, STD, LINC (L471-01)
	8063	802688	1	RADIATOR CAP SET @ 7PSI, 1" MNPT, KENCO (29508-7)
	8064	SEE SPOOL	3	VALVE, GATE, 1/2"-800# SW/NPT, RP, HANDWHEEL, NACE TRIM, A350 GR-LF2, VELAN (C03-2054B-26NB)
	8065	808050	4	VALVE, GLOBE, 2"-150CL RF, NACE, TRIM 12, LCC, BONNEY FORGE (2"-1-30-RF-LCC/316)
PI-5620	8088	808200	1	GAUGE, PRESSURE, 0-60PSIG, 4-1/2" DIAL, 1/2" MNPT BTM MOUNT, SILICON FILLED PHENOLIC CASE, 316SS INTERNALS, WIKA (9837744)
	8089	808244	1	VALVE, NEEDLE, 1/4" FNPT, 6000#, 316SS, NACE, ANDERSON (H7MS-2-SG)
RD-5600	8099	808596	1	RUPTURE DISC, FIKE GD SERIES, 1-1/2"-150CL, GRAPHITE, 10PSIG BURST PRESSURE



CUSTOMER CONNECTIONS

TAG	DESCRIPTION	SIZE/(VOLTAGE)
800	GLYCOL TANK VENT	1-1/2" MITER

GENERAL NOTES

- ALL PIPING DESIGNED, FABRICATED AND TESTED IN ACCORDANCE WITH ASME B31.3. C.A. = 1/8"
- ALL PIPE FITTING MATERIALS TO BE RATED FOR -50F LOW TEMPERATURE USE.
- UTILITY INSTRUMENT LINES:
316SS 0.035" WALL FOR 1/4" TUBING
316SS 0.049" WALL FOR 3/8" TUBING
316SS 0.063" WALL FOR 1/2" TUBING
C/W SWAGelok 316SS FITTINGS w/ 316SS BACK / FRONT FERRULES UNLESS OTHERWISE NOTED
- INSTRUMENT MEDIUM: CLEAN, DRY AIR
- PROCESS HARDWARE:
STUDS: 87M
NUTS: 2HM
GASKETS: PER BRP SPECIFICATION SPD-PP-00-0006, FLEXITALLIC 304SS/GRAFOL FILLER, 304SS INNER RING, CARBON STEEL OUTER (CENTERING) RING, FLEXICARB CG, LOW SEATING STRESS FILLER REQUIRED FOR 150CL APPLICATIONS.
- FINISH AND PAINTING REQUIREMENTS:
SURFACE PREPARATION: SSPC-SP2
PAINT: CLOVERDALE SERIES 7A, F34 WARM GREY ENAMEL
- PIPE MARKERS ARE TO BE FIXED TO PIPING IN CLEARLY VISIBLE LOCATIONS TO INDICATE FLOW DIRECTION.
- STAINLESS STEEL INSTRUMENT TAGS TO BE PROVIDED AND ATTACHED TO EACH PIECE OF INSTRUMENTATION EQUIPMENT.
- LOCTITE 567 TO BE USED FOR ALL THREADED ASSEMBLIES.

STAMP AREA

AS BUILT

BY: *[Signature]*

DATE: 12/14/15

THIS DOCUMENT IS SUPPLIED IN CONFIDENCE. REPRODUCTION OR DISTRIBUTION IN WHOLE OR PART WITHOUT THE WRITTEN PERMISSION OF NGC COMPRESSION SOLUTIONS IS STRICTLY PROHIBITED.

REV.	BY	CHK'D	REVISION DESCRIPTION	DATE
4	KDM	KDM	AS BUILT	10/30/15
3	ATE	KDM	ADD ITEM 8099, RUPTURE DISC	10/27/15
2	ATE	KDM	REV T-8000 TANK CONNECTION WAS 1" SW	08/27/15
1	ATE	KDM	REVISED BOM CUSTOMER ITEM TAGS	07/07/15
0	ATE	KDM	ISSUED FOR FABRICATION	06/01/15
B	ATE	KDM	REVISIONS PER ASRC MARKUPS DATED 03/18/15	04/23/15

NGC COMPRESSION SOLUTIONS

TITLE: COMPRESSOR COOLING SCHEMATIC
2 STAGE, RO-FLO 8DE / 210M; 200HP TEFC; AXH 42EF
2% SOUR NATURAL GAS COMPRESSOR PACKAGE

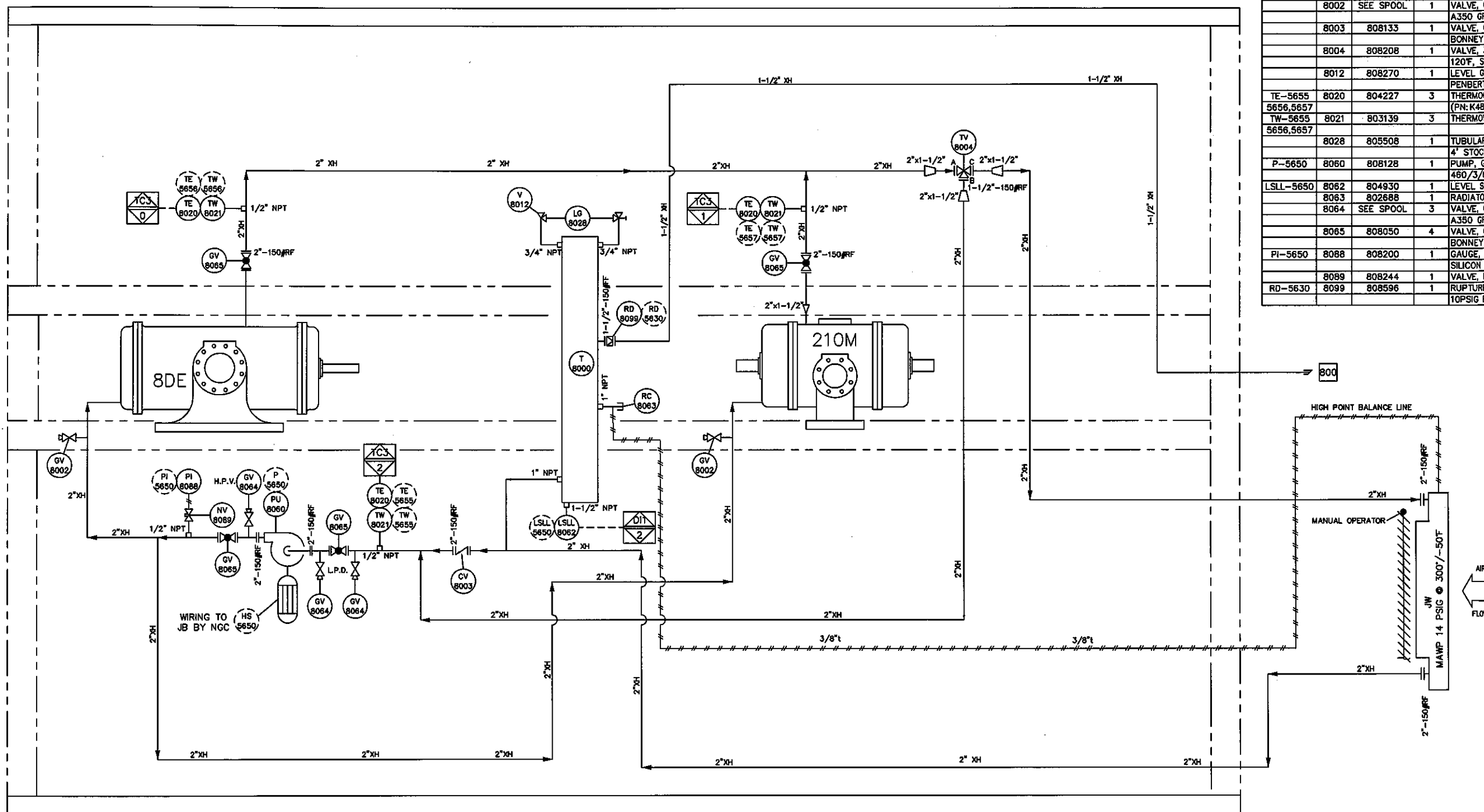
END USER/CONSULTANT: BROOKS RANGE PETROLEUM
LOCATION: MUSTANG PAD PRUDHOE BAY, ALASKA
DWN BY: ATE
DATE: 02/09/15
MODULE No: 56
No. REV'D: 1
SCALE: NTS

DIST. P.O. No.: MOC1100702359465
REVISION: 4
DWG. REFERENCE: PI-56-0008-01
DWR. No.: 17095-80A

BILL OF MATERIAL

NOTE: ITEM No. = FIRST TWO DIGITS (DWG REF.), LAST TWO DIGITS (item No.)

CUST TAG	ITEM	PART NO.	QTY.	DESCRIPTION
	8000	NPN	1	SURGE TANK, ONE COMPARTMENT, 37 GAL., W/LSL
	8002	SEE SPOOL	1	VALVE, GATE, 3/4"-800# SW/NPT, RP, HANDWHEEL, NACE TRIM, A350 GR-LF2, VELAN (C04-2054B-26NB)
	8003	808133	1	VALVE, CHECK, SWING, 2"-150CL RF, NACE, LCC, BONNEY FORGE (2"-1-60-FR LCC/316)
	8004	808208	1	VALVE, 3 WAY THERMOSTATIC CONTROL, 1-1/2"-150CL RF, BUNA O-RINGS 120F, STEEL, AMOT (1.5CFSJ12001)
	8012	808270	1	LEVEL GAUGE, VALVE SET, 3/4" NPTM, 3/4" TUBULAR GLASS, 316SS, PENBERTHY N7B (64260-020)
TE-5655, 5656, 5657	8020	804227	3	THERMOCOUPLE, 6" PROBE, "K" TYPE, 30" LEAD (PN: K48C-006-00-18-F38360-2)
TW-5655, 5656, 5657	8021	803139	3	THERMOWELL, 1/2" X 1/2" NPT, 2-1/2" U, 0.260 BORE, 316SS
	8028	805508	1	TUBULAR SIGHT GLASS FOR LEVEL GAUGE, 3/4" DIA X 4' STOCK LENGTH, REDLINE
P-5650	8060	808128	1	PUMP, GEAR, 2"-150CLFF, SS CONST, PSV, VITON SEAL, 1HP, 1750RPM, 460/3/60, GE G841 XP MOTOR, TUTHILL (GG030SAVME1DH000)
LSLL-5650	8062	804930	1	LEVEL SWITCH, 1-1/2" NPT, XP, STD, LINC (L471-01)
	8063	802688	1	RADIATOR CAP SET @ 7PSI, 1" MNPT, KENCO (29508-7)
	8064	SEE SPOOL	3	VALVE, GATE, 1/2"-800# SW/NPT, RP, HANDWHEEL, NACE TRIM, A350 GR-LF2, VELAN (C03-2054B-26NB)
	8065	808050	4	VALVE, GLOBE, 2"-150CL RF, NACE, TRIM 12, LCC, BONNEY FORGE (2"-1-30-RF-LCC/316)
PI-5650	8088	808200	1	GAUGE, PRESSURE, 0-60PSIG, 4-1/2" DIAL, 1/2" MNPT BTM MOUNT, SILICON FILLED PHENOLIC CASE, 316SS INTERNALS, WKA (9837744)
	8099	808244	1	VALVE, NEEDLE, 1/4" FNPT, 6000#, 316SS, NACE, ANDERSON (H7VIS-2-SG)
RD-5630	8099	808596	1	RUPTURE DISC, FIKE GD SERIES, 1-1/2"-150CL, GRAPHITE, 10PSIG BURST PRESSURE



CUSTOMER CONNECTIONS

TAG	DESCRIPTION	SIZE/(VOLTAGE)
800	GLYCOL TANK VENT	1-1/2" MITER

- GENERAL NOTES**
- ALL PIPING DESIGNED, FABRICATED AND TESTED IN ACCORDANCE WITH ASME B31.3. C.A. = 1/8" NDE = 10X M.P./RADIOGRAPHY
 - ALL PIPE FITTING MATERIALS TO BE RATED FOR -50°F LOW TEMPERATURE USE.
 - UTILITY INSTRUMENT LINES: 316SS 0.035" WALL FOR 1/4" TUBING 316SS 0.049" WALL FOR 3/8" TUBING 316SS 0.089" WALL FOR 1/2" TUBING c/w SWAGelok 316SS FITTINGS w/ 316SS BACK / FRONT FERRULES UNLESS OTHERWISE NOTED
 - INSTRUMENT MEDIUM: CLEAN, DRY AIR
 - INSTRUMENT HARDWARE: STUDS: 87M NUTS: 2HM GASKETS: PER BRP SPECIFICATION SPC-PP-00-0006, FLEXITALLIC 304SS/GRAFOIL FILLER, 304SS INNER RING, CARBON STEEL OUTER (CENTERING) RING, FLEXICARB CQ, LOW SEATING STRESS FILLER REQUIRED FOR 150CL APPLICATIONS.
 - FINISH AND PAINTING REQUIREMENTS: SURFACE PREPARATION: SSPC-SP2 PAINT: GLOVERDALE SERIES 74, F34 WARM GREY ENAMEL
 - PIPE MARKERS ARE TO BE FIXED TO PIPING IN CLEARLY VISIBLE LOCATIONS TO INDICATE FLOW DIRECTION.
 - STAINLESS STEEL INSTRUMENT TAGS TO BE PROVIDED AND ATTACHED TO EACH PIECE OF INSTRUMENTATION EQUIPMENT.
 - LOCITE 567 TO BE USED FOR ALL THREADED ASSEMBLIES.

STAMP AREA

AS BUILT

BY: *[Signature]*

DATE: 12/14/15

THIS DOCUMENT IS SUPPLIED IN CONFIDENCE. REPRODUCTION OR DISTRIBUTION IN WHOLE OR PART WITHOUT THE WRITTEN PERMISSION OF NGC COMPRESSION SOLUTIONS IS STRICTLY PROHIBITED.

REV.	BY	CHK'D	REVISION DESCRIPTION	DATE
4	KMB	KDM	AS BUILT	10/30/15
3	ATE	KDM	ADD ITEM 8099, RUPTURE DISC	10/27/15
2	ATE	KDM	REV T-8000 TANK CONNECTION WAS 1" SW	08/27/15
1	ATE	KDM	REVISED BGM CUSTOMER ITEM TAGS	07/07/15
0	ATE	KDM	ISSUED FOR FABRICATION	06/01/15
B	ATE	KDM	REVISIONS PER ASRC MARKUPS DATED 03/18/15	04/23/15

NGC COMPRESSION SOLUTIONS

TITLE: COMPRESSOR COOLING SCHEMATIC
2 STAGE, RO-FLO 8DE / 210M; 200HP TEFC; AXH 42EF
2% SOUR NATURAL GAS COMPRESSOR PACKAGE

END USER/CONSULTANT: BROOKS RANGE PETROLEUM
LOCATION: MUSTANG PAD
PRUDHOE BAY, ALASKA

DRAWN BY: ATE
DATE: 02/09/15
CHK'D BY: KDM
PROJ MGR: KDM

W.D. No.: 17095-NC
MODULE No.: 56
No. REQ'D: 1
SCALE: NTS

QUST. P.O. No.: MOC1100702359465
REVISION: 4
DWG. REFERENCE: PI-56-0013-01
DWG. No.: 17095-80B

BILL OF MATERIAL

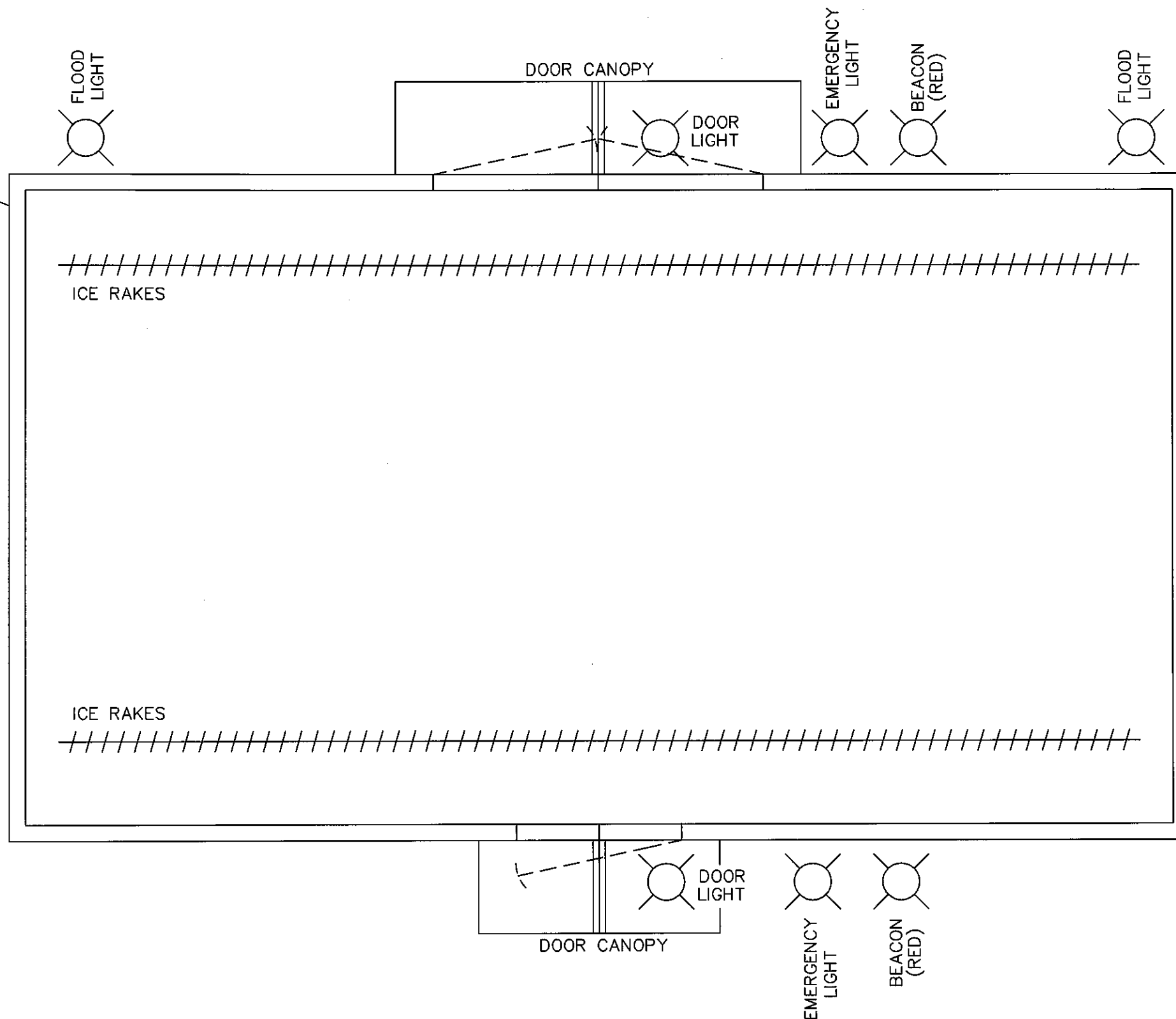
NOTE: ITEM No. = FIRST TWO DIGITS (DWG REF.), LAST TWO DIGITS (Item No.)

CUST TAG	ITEM	PART NO.	QTY.	DESCRIPTION
	9103	-	1	BUILDING, 16' 6" W x 42' 6" L x 10'-10" EAVE, SELF FRAMING, GABLE STYLE ROOF, 1:12 SLOPE
				22 GA. STEEL PRE-PAINTED EXTERIOR WALLS, ROOF AND TRIMS
				24 GA. WHITE FLUTED ALUMINUM INTERIOR LINER
				WALL PANELS, WALL CORNER TRIMS, AND WALL BASE TRIM: TAN (QC8315)
				ROOF PANELS, EAVE AND RAKE: MELCHERS GREEN (QC8307).
				R20 FIBERGLASS BATT INSULATION IN WALLS
				R35 INSULATION IN ROOF WITH 6 MIL VAPOR BARRIER THROUGHOUT
				REGULAR FASTENERS
				1 - 3'X7' STEEL DOOR (16GA DOOR, 14GA FRAME, R12 INSULATED) WITH LOCKING PANIC HARDWARE, HYDRAULIC DOOR CLOSURE
				CHECK CHAIN, WEATHER-STRIPPING, ALUMINUM THRESHOLD AND CANOPY
				1 - 6'X7' STEEL DOUBLE DOOR (18GA DOOR, 14GA FRAME, R12 INSULATED) WITH LOCKING PANIC HARDWARE, HYDRAULIC DOOR CLOSURE ON ACTIVE LEAF, BARREL BOLTS ON INACTIVE LEAF,
				CHECK CHAINS, WEATHER-STRIPPING, ALUMINUM THRESHOLD AND CANOPY
				FULL LENGTH ICE RAKES AT LOWER EAVES
				ALASKA P. ENG. STAMPED
				SEE WARMICK STRUCTURES DRAWING W34258 FOR ADDITIONAL DETAILS

NOTE: DESIGNED TO ACCOMMODATE WIND LOADS OF 1.7KPA, SNOW LOADS OF 3.35 KPA AND COLLATERAL LOAD (MECHANICAL, ELECTRICAL, CEILING, SPRINKLERS, ETC.) OF 0.15KPA. ANY CHANGES IN LOADING OR LOCATION MAY CAUSE DESIGN CHANGES AND IMPACT PRICING. DESIGNED WITH AN OCCUPANCY CATEGORY OF "III" PER ASCE 7-05.



BLD 9103



CUSTOMER CONNECTIONS

GENERAL NOTES

STAMP AREA

AS BUILT

BY: *[Signature]*

DATE: 12/14/15

NGC COMPRESSION SOLUTIONS

TITLE: BUILDING SCHEMATIC
2 STAGE, RO-FLO 8DE / 210M; 200HP TEFC; AXH 42EF
2% SOUR NATURAL GAS COMPRESSOR PACKAGE

DND USER/CONSULTANT: BROOKS RANGE PETROLEUM
CUST. P.O. No.: MOC1100702359465

LOCATION: MUSTANG PAD
PRUDHOE BAY, ALASKA

REVISION: 1
DWG. REFERENCE: PI-56-0010-01

DWG. No. 17095-NC

DATE: 02/09/15
MODULE No. 56

NO. REQ'D 1

SCALE: NTS
17095-91

THIS DOCUMENT IS SUPPLIED IN CONFIDENCE. REPRODUCTION OR DISTRIBUTION IN WHOLE OR PART WITHOUT THE WRITTEN PERMISSION OF NGC COMPRESSION SOLUTIONS IS STRICTLY PROHIBITED.

REV.	BY	CHK'D	REVISION DESCRIPTION	DATE	PROJ. MGR.	KDM	SCALE	NTS
1	KMB	KDM	AS BUILT	10/30/15				
0	ATE	KDM	ISSUED FOR FABRICATION	06/01/15				
B	ATE	KDM	REVISIONS PER ASRC MARKUPS DATED 03/18/15	04/23/15				
A	ATE	KDM	ISSUED FOR APPROVAL	03/06/15				