

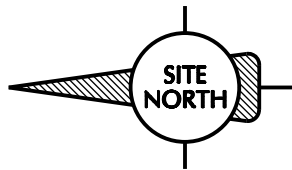
\*NOTE: SKID SIDE HIDDEN FOR CLARITY.

AS-BUILT  
BY: \_\_\_\_\_  
DATE: \_\_\_\_\_

SPECIAL  
MATERIALS REQUIRED  
USE ONLY MATERIALS RELEASED BY  
QUALITY CONTROL

NO.	DATE	REVISION	BY
A	03/27/15	ISSUED FOR APPROVAL	KMB
B	04/24/15	REVISED PER CUSTOMER REVIEW	KMB
0	06/22/15	ISSUED FOR FABRICATION	KMB
1	10/29/15	AS BUILT	KMB

5120 6th STREET N.E. CALGARY, ALBERTA T2K 4W5 TEL: 403. 274.6106 FAX: 403. 730.1644 www.ngc-td.com	DRAWN BY: <b>KMB</b> APPROVED BY: <b>KDM</b> JOB NO.: <b>17095-NC</b> TITLE: <b>GENERAL ARRANGEMENT (RIGHT SIDE VIEW)</b> END USER: <b>BROOKS RANGE PETROLEUM MUSTANG PAD, PRUDHOE BAY, ALASKA</b> SCALE: <b>NTS</b> DWG. NO.: <b>17095-500</b> SHEET 2 OF 10 REV: <b>1</b>	DATE: <b>03/18/15</b> DATE: <b>03/18/15</b> PART NO.: <b>MODULE 56</b>
---	---	--



148-1/4  
BUILDING EAVE

57-5/8" CW INLET  
41-7/16" PC OUTLET  
26-11/16" IC OUTLET

24-1/16"

615

480-15/16" CRANE LEG

435" V-5630

346-1/8" V-5640

313-15/16" CRANE LEG

250 C.O.G.

207-5/16" CRANE LEG

175" CP-5600

133-5/16" 120VAC JUNCTION BOX

113-13/16" UPS JUNCTION BOX

87-9/16" CONTROL JUNCTION BOX

54-9/16" 480V JUNCTION BOX

29-1/16" CRANE LEG

0 DATUM  
T.O.S.

6-7/16" AC OUTLET

15-5/16" IC INLET

19-11/16" PC INLET

23-1/8" CW OUTLET

105

130  
BUILDING EAVE

51-1/8" CW OUTLET  
42-13/16" PC INLET  
36 BOTTOM OF JUNCTION BOXES  
32-3/16" IC INLET  
19-15/16" AC INLET  
14-3/16" CRANKSHAFT  
10-3/4" AC OUTLET

0 DATUM  
T.O.S.

3 C.O.G.

\*NOTE: SKID SIDE HIDDEN FOR CLARITY.

AS-BUILT

BY: \_\_\_\_\_  
DATE: \_\_\_\_\_

NO.	DATE	REVISION	BY
A	03/27/15	ISSUED FOR APPROVAL	KMB
B	04/24/15	REVISED PER CUSTOMER REVIEW	KMB
0	06/22/15	ISSUED FOR FABRICATION	KMB
1	10/29/15	AS BUILT	KMB

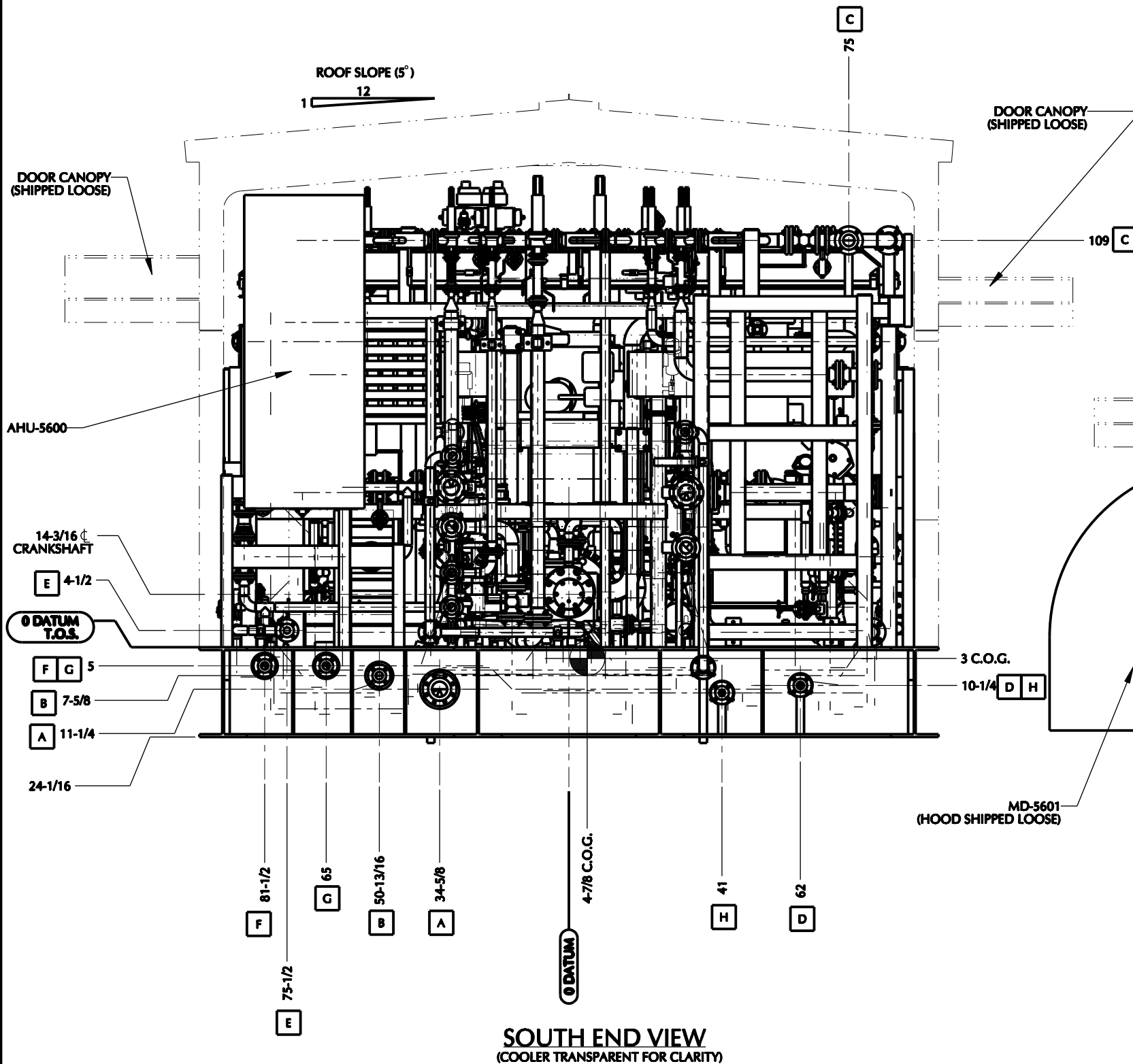


5120 6th STREET N.E.  
CALGARY, ALBERTA  
T2K 4W5  
TEL: 403. 274.6106  
FAX: 403. 730.1644  
www.ngc-ltd.com

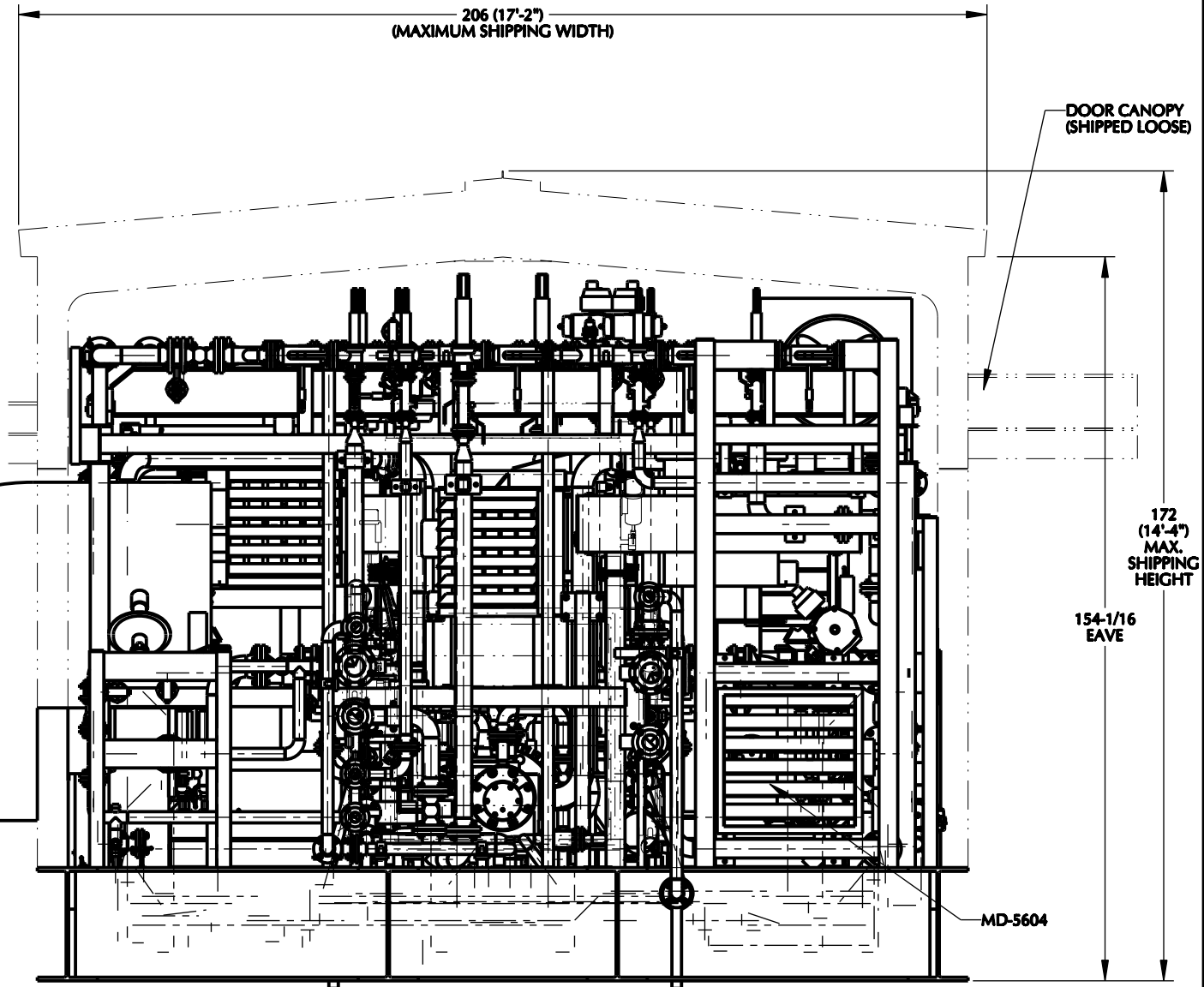
DRAWN BY: KMB	DATE: 03/18/15
APPROVED BY: KDM	DATE: 03/18/15
JOB NO.: 17095-NC	PART NO.: MODULE 56
TITLE: GENERAL ARRANGEMENT	
END USER: BROOKS RANGE PETROLEUM MUSTANG PAD, PRUDHOE BAY, ALASKA	
SCALE: NTS	DWG. NO.: 17095-500
SHEET 3 OF 10	
REV 1	

SPECIAL  
MATERIALS REQUIRED  
USE ONLY MATERIALS RELEASED BY  
QUALITY CONTROL

THIS DRAWING IS THE EXCLUSIVE PROPERTY OF  
NGC COMPRESSION SOLUTIONS LTD., AND CANNOT BE  
REPRODUCED OR DISTRIBUTED WITHOUT THE  
PERMISSION OF NGC COMPRESSION SOLUTIONS LTD.



**SOUTH END VIEW**  
(COOLER TRANSPARENT FOR CLARITY)



**NORTH END VIEW**  
(COOLER TRANSPARENT FOR CLARITY)

AS-BUILT

BY: \_\_\_\_\_  
DATE: \_\_\_\_\_

NO.	DATE	REVISION	BY
A	03/27/15	ISSUED FOR APPROVAL	KMB
B	04/24/15	REVISED PER CUSTOMER REVIEW	KMB
0	06/22/15	ISSUED FOR FABRICATION	KMB
1	10/29/15	AS BUILT	KMB



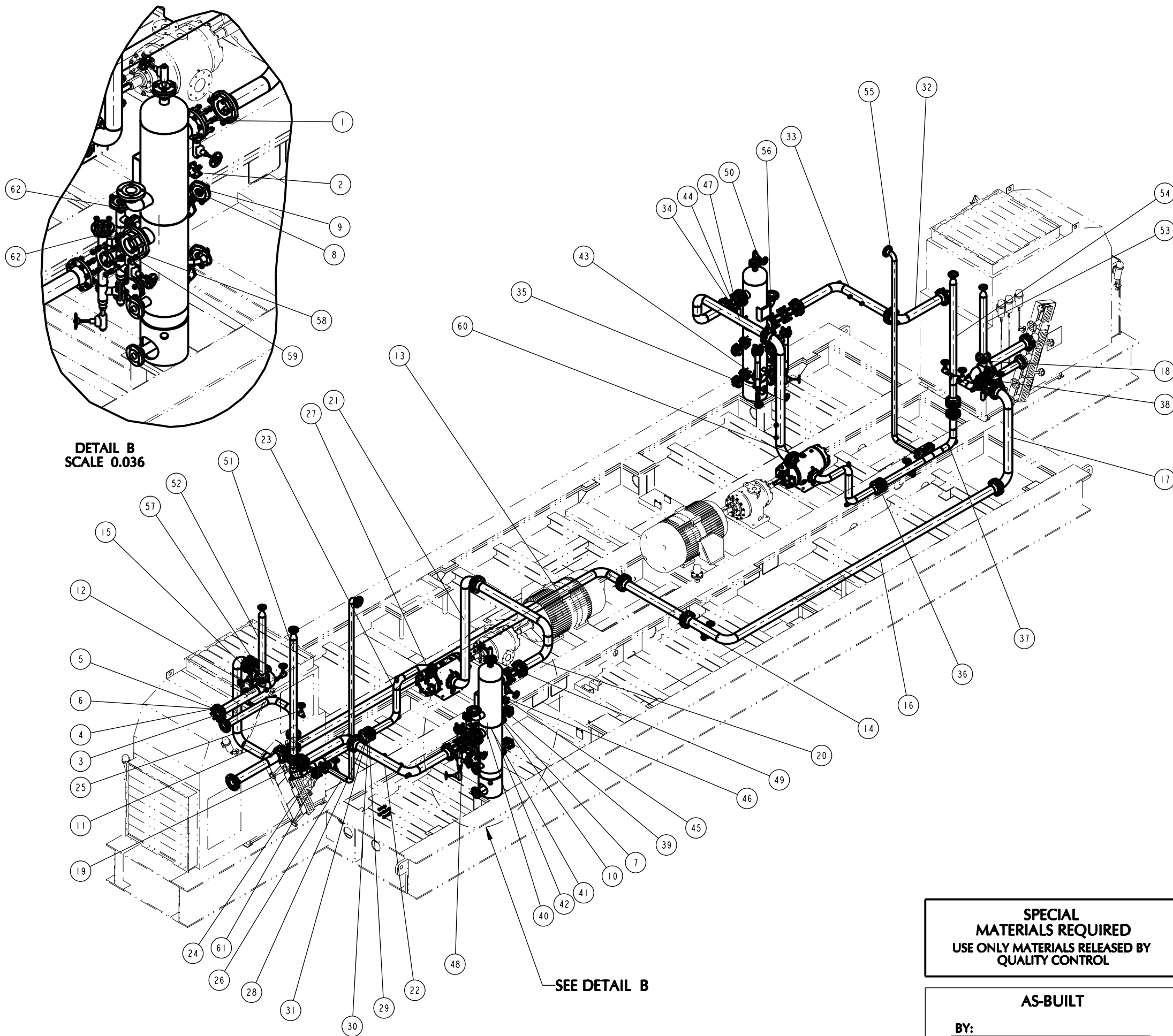
5120 6th STREET N.E.  
CALGARY, ALBERTA  
T2K 4W5  
TEL: 403. 274.6106  
FAX: 403. 730.1644  
www.ngc-ltd.com

DRAWN BY: KMB	DATE: 03/18/15
APPROVED BY: KDM	DATE: 03/18/15
JOB NO.: 17095-NC	PART NO.: MODULE 56
TITLE: GENERAL ARRANGEMENT (NORTH & SOUTH END VIEWS)	
END USER: BROOKS RANGE PETROLEUM MUSTANG PAD, PRUDHOE BAY, ALASKA	
SCALE: NTS	DWG. NO.: 17095-500
	REV: 1

**SPECIAL  
MATERIALS REQUIRED**  
USE ONLY MATERIALS RELEASED BY  
QUALITY CONTROL

THIS DRAWING IS THE EXCLUSIVE PROPERTY OF  
NGC COMPRESSION SOLUTIONS LTD., AND CANNOT BE  
REPRODUCED OR DISTRIBUTED WITHOUT THE  
PERMISSION OF NGC COMPRESSION SOLUTIONS LTD.






**SPECIAL  
MATERIALS REQUIRED**  
USE ONLY MATERIALS RELEASED BY  
QUALITY CONTROL

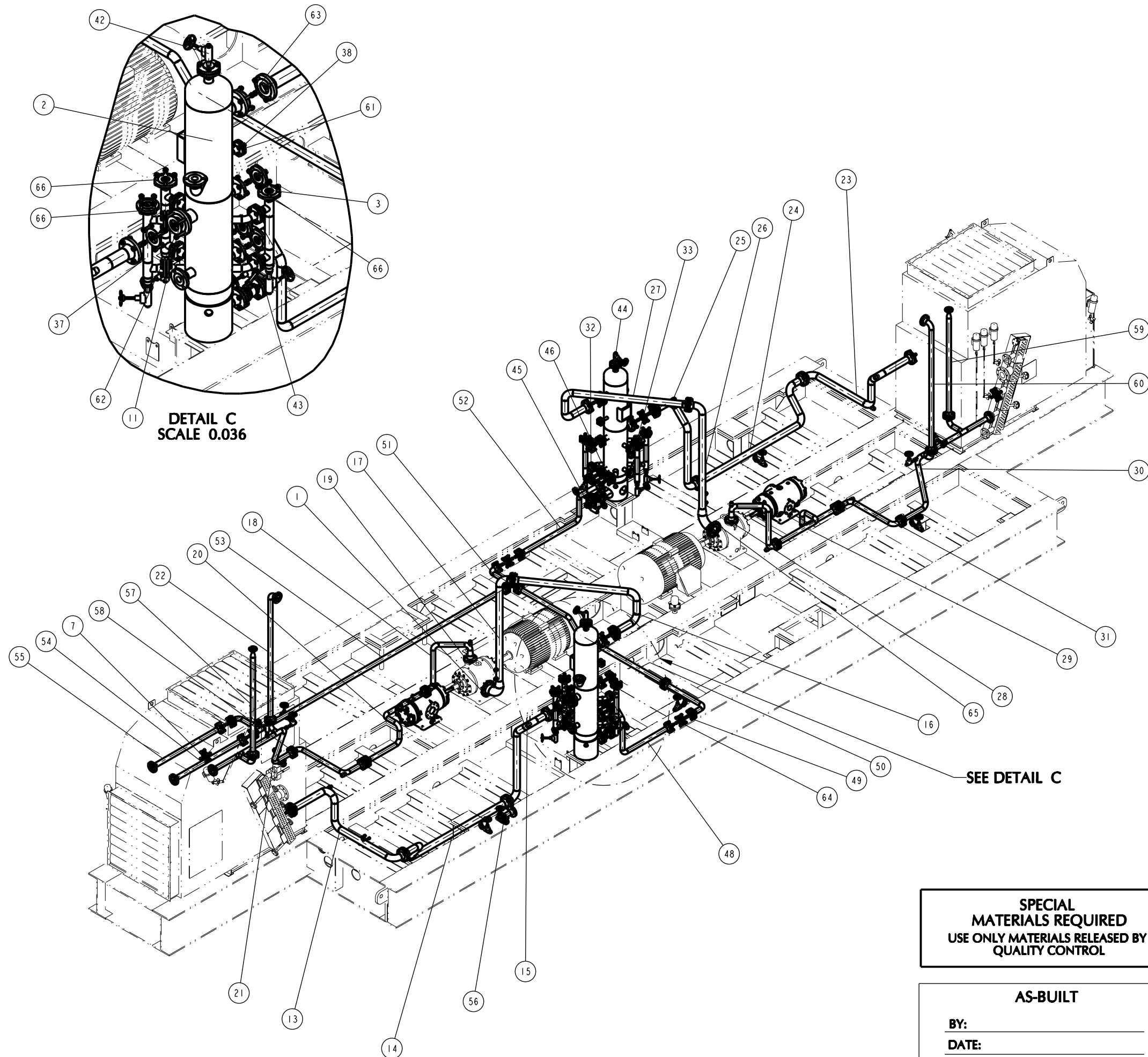
**AS-BUILT**

BY: \_\_\_\_\_  
DATE: \_\_\_\_\_

ITEM	PART #	QTY.	UOM	DESCRIPTION
1	808278	16	EA	GASKET,FLEXITALLIC (LSI),4"-150CL
2	17095-5600	2	EA	STAGE 1 SCRUBBER, 12 OD x 60 S/S, 230 MAWP
3	GROUP	20	EA	GSKT, 4"-150CL GREY, B7M STUD 5/8"x3-1/2", 2HM NUT
4	808278	1	EA	GASKET,FLEXITALLIC (LSI),4"-150CL
5	801938	8	EA	STUD, 5/8-11TPI x 3 1/2" LG, B7M
6	700695	16	EA	HEX, NUT, 5/8" 2HM
7	GROUP	23	EA	GSKT, 2"-150CL GREY, B7M STUD 5/8"x3-1/2", 2HM NUT
8	808276	1	EA	GASKET,FLEXITALLIC (LSI),2"-150CL
9	801938	4	EA	STUD, 5/8-11TPI x 3 1/2" LG, B7M
10	700695	8	EA	HEX, NUT, 5/8" 2HM
11	17095-601	1	EA	SPOOL FROM PROCESS INLET - TO SPOOLS 602 & 603
12	17095-602	1	EA	SPOOL FROM SPOOL 601 - TO COOLER 5600 PC INLET
13	17095-603	1	EA	SPOOL FROM SPOOL 602 - TO SPOOL 604
14	17095-604	1	EA	SPOOL FROM SPOOL 603 - TO SPOOL 605
15	17095-651	6	EA	SPOOL 4-150CL BLEED RING ASSEMBLY -
16	17095-605	1	EA	SPOOL FROM SPOOL 604 - TO SPOOL 606
17	17095-606	1	EA	SPOOL FROM SPOOL 605 - TO SPOOL 607
18	17095-607	1	EA	SPOOL FROM SPOOL 606 - TO COOLER 5630 PC INLET
19	17095-608	1	EA	SPOOL FROM COOLER 5600 OUTLET - TO SPOOL 609
20	17095-610	1	EA	SPOOL FROM V-5600 OUTLET - TO SPOOL 611
21	17095-611	1	EA	SPOOL FROM SPOOL 610 - TO C-5600 INLET
22	17095-609	1	EA	SPOOL FROM SPOOL 608 - TO V-5600 INLET
23	17095-612	1	EA	SPOOL FROM C-5600 OUTLET - TO SPOOL 613
24	17095-613	1	EA	SPOOL FROM SPOOL 612 - TO SPOOL 614
25	17095-614	1	EA	SPOOL FROM SPOOL 613 - TO COOLER 5600 IC INLET
26	17095-640	1	EA	SPOOL FROM SPOOL 613 - TO SPOOL 650
27	808277	2	EA	GASKET,FLEXITALLIC (LSI),3"-150CL
28	GROUP	11	EA	GSKT, 3"-150CL GREY, B7M STUD 5/8"x3-1/2", 2HM NUT
29	808277	1	EA	GASKET,FLEXITALLIC (LSI),3"-150CL
30	801938	4	EA	STUD, 5/8-11TPI x 3 1/2" LG, B7M
31	700695	8	EA	HEX, NUT, 5/8" 2HM
32	17095-615	1	EA	SPOOL FROM COOLER 5630 PC OUTLET - TO SPOOL 616
33	17095-616	1	EA	SPOOL FROM SPOOL 615 - TO V-5630 INLET
34	17095-617	1	EA	SPOOL FROM V-5630 OUTLET - TO SPOOL 618
35	17095-618	1	EA	SPOOL FROM SPOOL 617 - TO C-5630 INLET
36	17095-619	1	EA	SPOOL FROM C-5630 OUTLET - TO SPOOL 620
37	17095-620	1	EA	SPOOL FROM SPOOL 619 - TO SPOOL 621
38	17095-621	1	EA	SPOOL FROM SPOOL 620 - TO COOLER 5630 IC INLET
39	808173	4	EA	FLANGE,RF SW,2 X 3/4-150CL
40	GROUP	12	EA	GSKT, 1-1/2"-150CL GREY, B7M STUD 1/2"x3", 2HM NUT
41	808275	1	EA	GASKET,FLEXITALLIC (LSI),1-1/2"-150CL
42	803756	4	EA	STUD, 1/2-13TPI x 3" LG, B7M
43	700694	8	EA	HEX, NUT, 1/2" 2HM
44	GROUP	2	EA	GSKT, 1"-150CL GREY, B7M STUD 1/2"x2-1/2", 2HM NUT
45	808287	1	EA	GASKET,FLEXITALLIC (LSI),1"-150CL
46	802994	4	EA	STUD, 1/2-13TPI x 2 1/2" LG, B7M
47	700694	8	EA	HEX, NUT, 1/2" 2HM
48	17095-BRIDLE	6	EA	SCRUBBER LEVEL TRANSMITTER BRIDLE
49	17095-691	1	EA	SPOOL V-5600 VENT -
50	17095-692	1	EA	SPOOL V-5630 VENT -
51	17095-641	1	EA	SPOOL FROM SPOOL 613 - TO SPOOL 650
52	17095-643	1	EA	SPOOL FROM SPOOL 602 - TO SPOOL 650
53	17095-645	1	EA	SPOOL FROM SPOOL 607 - TO SPOOL 655
54	17095-646	1	EA	SPOOL FROM SPOOL 620 - TO SPOOL 655
55	17095-649	1	EA	SPOOL FROM SPOOL 620 - TO SPOOL 655
56	805069	2	EA	FLANGE,RF BLIND,2-150CL
57	801943	16	EA	STUD, 5/8-11TPI x 6" LG, B7M
58	801942	32	EA	STUD, 5/8-11TPI x 5 1/2" LG, B7M
59	700695	96	EA	HEX, NUT, 5/8" 2HM
60	806670	24	EA	CAPSCREW, HEX, 5/8-UNC x 2", GR8
61	805494	2	EA	FLANGE,RF RED THD,2-150CL x 3/4 NPT
62	808272	6	EA	FLANGE ISOLATION KIT 2-150CL G-10 LINEBACKER

NO.	DATE	REVISION	BY
A	03/27/15	ISSUED FOR APPROVAL	KMB
B	04/24/15	REVISED PER CUSTOMER REVIEW	KMB
0	06/22/15	ISSUED FOR FABRICATION	KMB
1	10/29/15	AS BUILT	KMB

	5120 6th STREET N.E. CALGARY, ALBERTA T2K 4W5		DRAWN BY:	KMB	DATE:	03/18/15
	TEL: 403. 274.6106 FAX: 403. 730.1644 www.ngc-ltd.com		APPROVED BY:	KDM	DATE:	03/18/15
			JOB NO.:	17095-NC	PART NO.	MODULE 56
			TITLE: GENERAL ARRANGEMENT STAGE ONE			
THIS DRAWING IS THE EXCLUSIVE PROPERTY OF NGC COMPRESSION SOLUTIONS LTD., AND CANNOT BE REPRODUCED OR DISTRIBUTED WITHOUT THE PERMISSION OF NGC COMPRESSION SOLUTIONS LTD.			END USER:			BROOKS RANGE PETROLEUM MUSTANG PAD, PRUDHOE BAY, ALASKA
			SCALE	DWG. NO.	SHEET 5 OF 10	REV
			NTS	17095-500		1




ITEM	PART #	QTY.	UOM	DESCRIPTION
1	808278	2	EA	GASKET,FLEXITALLIC (LSI),4"-150CL
2	17095-5610	2	EA	STAGE 2 SCRUBBER, 12 OD x 60 5/8, 230 MAWP
3	GROUP	45	EA	GSKT, 2"-150CL GREY, B7M STUD 5/8"x3-1/2", 2HM NUT
4	808276	1	EA	GASKET,FLEXITALLIC (LSI),2"-150CL
5	801938	4	EA	STUD, 5/8-11TPI x 3 1/2" LG, B7M
6	700695	8	EA	HEX, NUT, 5/8" 2HM
7	GROUP	16	EA	GSKT, 3"-150CL GREY, B7M STUD 5/8"x3-1/2", 2HM NUT
8	808277	1	EA	GASKET,FLEXITALLIC (LSI),3"-150CL
9	801938	4	EA	STUD, 5/8-11TPI x 3 1/2" LG, B7M
10	700695	8	EA	HEX, NUT, 5/8" 2HM
11	808277	10	EA	GASKET,FLEXITALLIC (LSI),3"-150CL
12	17095-652	4	EA	SPOOL 3-150CL BLEED RING ASSEMBLY -
13	17095-622	1	EA	SPOOL FROM COOLER 5600 IC OUTLET - TO SPOOL 623
14	17095-623	1	EA	SPOOL FROM SPOOL 622 - TO SPOOL 624
15	17095-624	1	EA	SPOOL FROM SPOOL 623 - TO V-5610 INLET
16	17095-625	1	EA	SPOOL FROM V-5610 OUTLET - TO SPOOL 626
17	17095-626	1	EA	SPOOL FROM SPOOL 625 - TO C-5610 INLET
18	17095-627	1	EA	SPOOL FROM C-5610 OUTLET - TO SPOOL 628
19	808296	2	EA	GASKET,FLEXITALLIC (LSI),2-1/2"-150CL
20	17095-628	1	EA	SPOOL FROM SPOOL 627 - TO SPOOL 644
21	17095-629	1	EA	SPOOL FROM SPOOL 644 - TO COOLER 5600 AC INLET
22	17095-630	1	EA	SPOOL FROM SPOOL 629 - TO SPOOL 650
23	17095-631	1	EA	SPOOL FROM COOLER 5630 IC OUTLET - TO SPOOL 632
24	17095-632	1	EA	SPOOL FROM SPOOL 631 - TO SPOOL 633
25	17095-633	1	EA	SPOOL FROM SPOOL 623 - TO V-5640 INLET
26	17095-634	1	EA	SPOOL FROM SPOOL 635 - TO C-5640 INLET
27	17095-635	1	EA	SPOOL FROM V-5640 OUTLET - TO SPOOL 634
28	17095-636	1	EA	SPOOL FROM C-5640 OUTLET - TO SPOOL 637
29	17095-637	1	EA	SPOOL FROM SPOOL 636 - TO SPOOL 639
30	17095-638	1	EA	SPOOL FROM SPOOL 639 - TO COOLER 5640 AC INLET
31	17095-639	1	EA	SPOOL FROM SPOOL 637 - TO SPOOL 638
32	808173	4	EA	FLANGE,RF SW, 2 X 3/4-150CL
33	GROUP	12	EA	GSKT, 1-1/2"-150CL GREY, B7M STUD 1/2"x3", 2HM NUT
34	808275	1	EA	GASKET,FLEXITALLIC (LSI),1-1/2"-150CL
35	803756	4	EA	STUD, 1/2-13TPI x 3" LG, B7M
36	700694	8	EA	HEX, NUT, 1/2" 2HM
37	17095-BRIDLE	6	EA	SCRUBBER LEVEL TRANSMITTER BRIDLE
38	GROUP	2	EA	GSKT, 1"-150CL GREY, B7M STUD 1/2"x2-1/2", 2HM NUT
39	808287	1	EA	GASKET,FLEXITALLIC (LSI),1"-150CL
40	802994	4	EA	STUD, 1/2-13TPI x 2 1/2" LG, B7M
41	700694	8	EA	HEX, NUT, 1/2" 2HM
42	17095-693	1	EA	SPOOL V-5610 VENT -
43	17095-694	1	EA	SPOOL FROM V-5610 DRAIN -
44	17095-695	1	EA	SPOOL FROM V-5640 VENT -
45	17095-696	1	EA	SPOOL FROM V-5640 DRAIN -
46	808276	8	EA	GASKET,FLEXITALLIC (LSI),2"-150CL
47	17095-653	4	EA	SPOOL 2-150CL BLEED RING ASSEMBLY -
48	17095-697	1	EA	SPOOL FROM SPOOL 698 - TO V-5610 LIQUID INLET
49	17095-698	1	EA	SPOOL FROM SPOOL 699 - TO SPOOL 697
50	17095-699	1	EA	SPOOL FROM SPOOL 671 - TO SPOOL 698
51	17095-671	1	EA	SPOOL FROM SPOOL 673 - TO SPOOL 672 & 699
52	17095-672	1	EA	SPOOL FROM SPOOL 671 - TO V-5640 LIQUID INLET
53	17095-673	1	EA	SPOOL FROM SPOOL 674 & 675 - TO SPOOL 671
54	17095-674	1	EA	SPOOL FROM MODULE 58 LIQUIDS - TO SPOOL 673
55	17095-675	1	EA	SPOOL FROM MODULE 57 LIQUIDS - TO SPOOL 673
56	17095-676	1	EA	SPOOL FROM SPOOL 687 - TO SPOOL 677
57	17095-642	1	EA	SPOOL FROM SPOOL 629 - TO SPOOL 650
58	17095-644	1	EA	SPOOL FROM SPOOL 628 - TO SPOOL 629
59	17095-647	1	EA	SPOOL FROM SPOOL 638 - TO SPOOL 655
60	17095-648	1	EA	SPOOL FROM SPOOL 638 - TO SPOOL 655
61	802902	2	EA	FLANGE,RF RED THD,1-150CL x 1/2 NPT
62	700695	64	EA	HEX, NUT, 5/8" 2HM
63	801942	16	EA	STUD, 5/8-11TPI x 5 1/2" LG, B7M
64	801941	16	EA	STUD, 5/8-11TPI x 5" LG, B7M
65	806670	24	EA	CAPSCREW, HEX, 5/8-UNC x 2", GR8
66	808272	6	EA	FLANGE ISOLATION KIT 2-150CL G-10 LINEBACKER

SPECIAL  
MATERIALS REQUIRED  
USE ONLY MATERIALS RELEASED BY  
QUALITY CONTROL

AS-BUILT

BY: \_\_\_\_\_  
DATE: \_\_\_\_\_

NO.	DATE	REVISION	BY
A	03/27/15	ISSUED FOR APPROVAL	KMB
B	04/24/15	REVISED PER CUSTOMER REVIEW	KMB
0	06/22/15	ISSUED FOR FABRICATION	KMB
1	10/29/15	AS BUILT	KMB

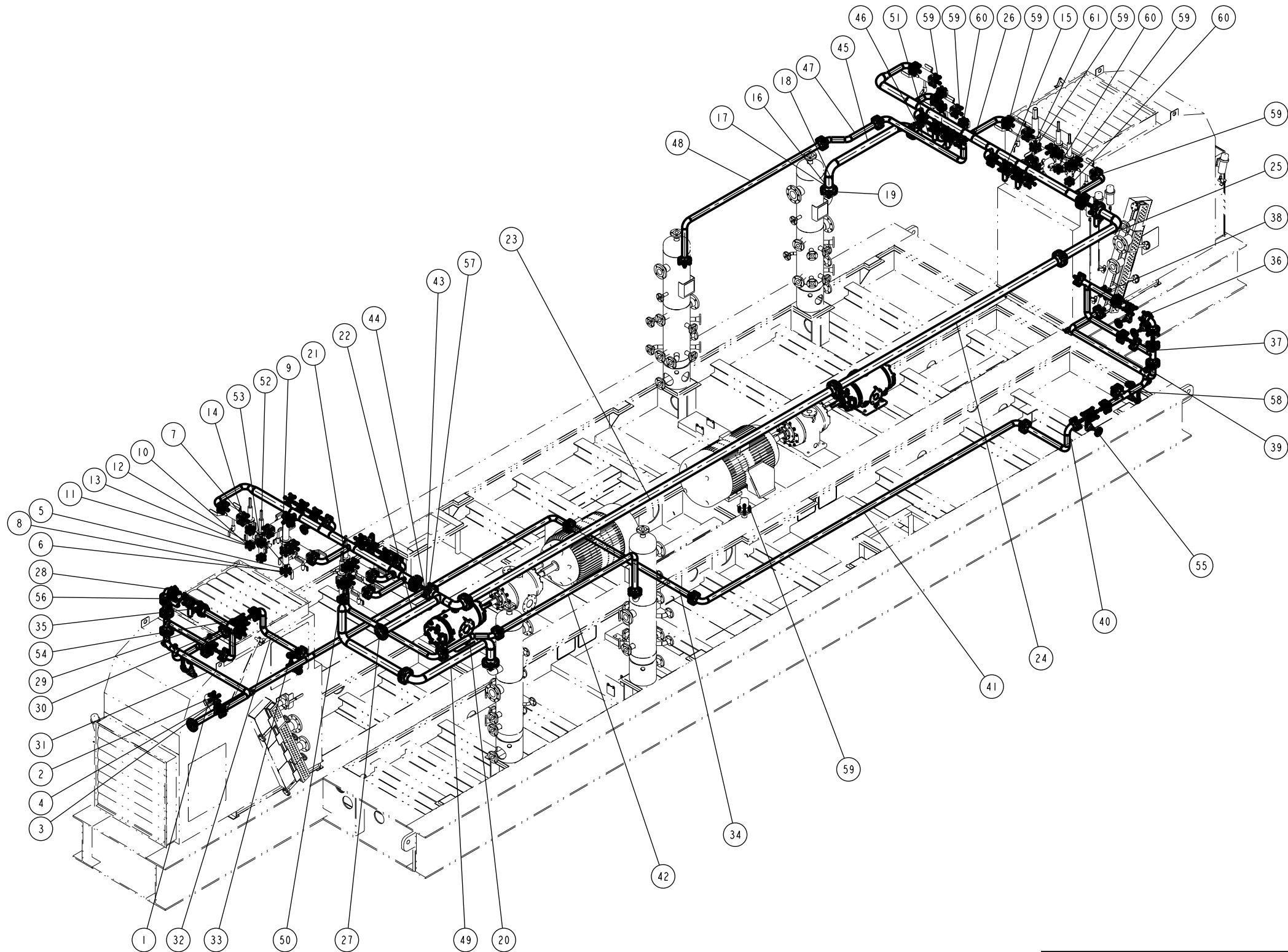


5120 6th STREET N.E.  
CALGARY, ALBERTA  
T2K 4W5  
  
TEL: 403. 274.6106  
FAX: 403. 730.1644  
www.ngc-td.com

DRAWN BY: KMB DATE: 03/18/15  
APPROVED BY: KDM DATE: 03/18/15  
JOB NO.: 17095-NC PART NO: MODULE 56  
TITLE: GENERAL ARRANGEMENT  
STAGE TWO  
END USER: BROOKS RANGE PETROLEUM  
MUSTANG PAD, PRUDHOE BAY, ALASKA

SCALE: NTS DWG. NO: 17095-500 SHEET 6 OF 10  
REV 1

THIS DRAWING IS THE EXCLUSIVE PROPERTY OF  
NGC COMPRESSION SOLUTIONS LTD., AND CANNOT BE  
REPRODUCED OR DISTRIBUTED WITHOUT THE  
PERMISSION OF NGC COMPRESSION SOLUTIONS LTD.



SPECIAL  
MATERIALS REQUIRED  
USE ONLY MATERIALS RELEASED BY  
QUALITY CONTROL

AS-BUILT

BY: \_\_\_\_\_  
DATE: \_\_\_\_\_

ITEM	PART #	QTY.	UOM	DESCRIPTION
1	GROUP	62	EA	GSKT, 2"-150CL GREY, B7M STUD 5/8"x3-1/2", 2HM NUT
2	808276	1	EA	GASKET,FLEXITALLIC (LSI),2"-150CL
3	801938	4	EA	STUD, 5/8-11TPI x 3 1/2" LG, B7M
4	700695	8	EA	HEX, NUT, 5/8" 2HM
5	GROUP	2	EA	GSKT, 1-1/2"-150CL GREY, B7M STUD 1/2"x3", 2HM NUT
6	808275	1	EA	GASKET,FLEXITALLIC (LSI),1-1/2"-150CL
7	803756	4	EA	STUD, 1/2-13TPI x 3" LG, B7M
8	700694	8	EA	HEX, NUT, 1/2" 2HM
9	808275	2	EA	GASKET,FLEXITALLIC (LSI),1-1/2"-150CL
10	GROUP	8	EA	GSKT, 1"-150CL GREY, B7M STUD 1/2"x2-1/2", 2HM NUT
11	808287	1	EA	GASKET,FLEXITALLIC (LSI),1"-150CL
12	802994	4	EA	STUD, 1/2-13TPI x 2 1/2" LG, B7M
13	700694	8	EA	HEX, NUT, 1/2" 2HM
14	808287	8	EA	GASKET,FLEXITALLIC (LSI),1"-150CL
15	808276	30	EA	GASKET,FLEXITALLIC (LSI),2"-150CL
16	GROUP	9	EA	GSKT, 3"-150CL GREY, B7M STUD 5/8"x3-1/2", 2HM NUT
17	808277	1	EA	GASKET,FLEXITALLIC (LSI),3"-150CL
18	801938	4	EA	STUD, 5/8-11TPI x 3 1/2" LG, B7M
19	700695	8	EA	HEX, NUT, 5/8" 2HM
20	17095-670	2	EA	SPOOL FROM SPOOL 700 - TO SPOOL 656
21	17095-650	2	EA	SPOOL PSV HEADER C-5600/5610 - TO SPOOL 651
22	17095-651	2	EA	SPOOL FROM SPOOL 560 & 652 - TO SKID EDGE (C)
23	17095-652	2	EA	SPOOL FROM SPOOL 653 - TO SPOOL 651
24	17095-653	2	EA	SPOOL FROM SPOOL 654 - TO SPOOL 652
25	17095-654	2	EA	SPOOL FROM SPOOL 655 - TO SPOOL 653
26	17095-655	2	EA	SPOOL PSV HEADER C-5630/5640 - TO SPOOL 654
27	17095-656	2	EA	SPOOL FROM SPOOL 670 - TO SPOOL 650
28	17095-657	1	EA	SPOOL FROM SPOOL 658 - TO SPOOL 659
29	17095-658	1	EA	SPOOL FROM SPOOL 660 - TO SPOOL 657 & 659
30	17095-659	1	EA	SPOOL FROM SPOOL 658 - TO SPOOL 602
31	17095-660	1	EA	SPOOL FROM COOLER 5600 AC OUTLET - TO SPOOL 661
32	17095-661	1	EA	SPOOL FROM SPOOL 660 - TO SPOOL 662
33	17095-662	1	EA	SPOOL FROM SPOOL 661 & 663 - TO FINAL DISCHARGE
34	17095-663	1	EA	SPOOL FROM SPOOL 669 - TO SPOOL 662
35	17095-653	14	EA	SPOOL 2-150CL BLEED RING ASSEMBLY -
36	17095-664	1	EA	SPOOL FROM SPOOL 665 - TO SPOOL 666
37	17095-665	1	EA	SPOOL FROM SPOOL 667 - TO SPOOL 664 & 666
38	17095-666	1	EA	SPOOL FROM SPOOL 664 & 665 - TO SPOOL 607
39	17095-667	1	EA	SPOOL FROM COOLER 5640 AC OUTLET - TO SPOOL 668
40	17095-668	1	EA	SPOOL FROM SPOOL 667 - TO SPOOL 669
41	17095-669	1	EA	SPOOL FROM SPOOL 668 - TO SPOOL 663
42	17095-700	1	EA	SPOOL FROM SPOOL 680 - TO PU-5600 INLET
43	808277	4	EA	GASKET,FLEXITALLIC (LSI),3"-150CL
44	17095-652	2	EA	SPOOL 3-150CL BLEED RING ASSEMBLY -
45	17095-702	1	EA	SPOOL FROM V-5630 PRESSURE OUTLET - TO SPOOL 727
46	17095-703	1	EA	SPOOL FROM SPOOL 704 - TO SPOOL 655
47	17095-704	1	EA	SPOOL FROM SPOOL 705 - TO SPOOL 703
48	17095-705	1	EA	SPOOL FROM V-5640 PRESSURE OUTLET - TO SPOOL 704
49	17095-684	1	EA	SPOOL FROM V-5600 PRESSURE VENT - TO SPOOL 689
50	17095-689	1	EA	SPOOL FROM SPOOL 685 - TO SPOOL 687
51	17095-727	1	EA	SPOOL FROM SPOOL 702 - TO SPOOL 655
52	803757	40	EA	STUD, 1/2-13TPI x 3 1/2" LG, B7M
53	700694	88	EA	HEX, NUT, 1/2" 2HM
54	806722	8	EA	STUD, 5/8-11TPI x 8" LG, B7M
55	700695	120	EA	HEX, NUT, 5/8" 2HM
56	801941	48	EA	STUD, 5/8-11TPI x 5" LG, B7M
57	801942	8	EA	STUD, 5/8-11TPI x 5 1/2" LG, B7M
58	805494	2	EA	FLANGE,RF RED THD,2-150CL x 3/4 NPT
59	808272	21	EA	FLANGE ISOLATION KIT 2-150CL G-10 LINEBACKER
60	804687	16	EA	FLANGE ISOLATION KIT 1-150CL G-10 LINEBACKER
61	808273	4	EA	FLANGE ISOLATION KIT 1-1/2-150CL G-10 LINEBACKER

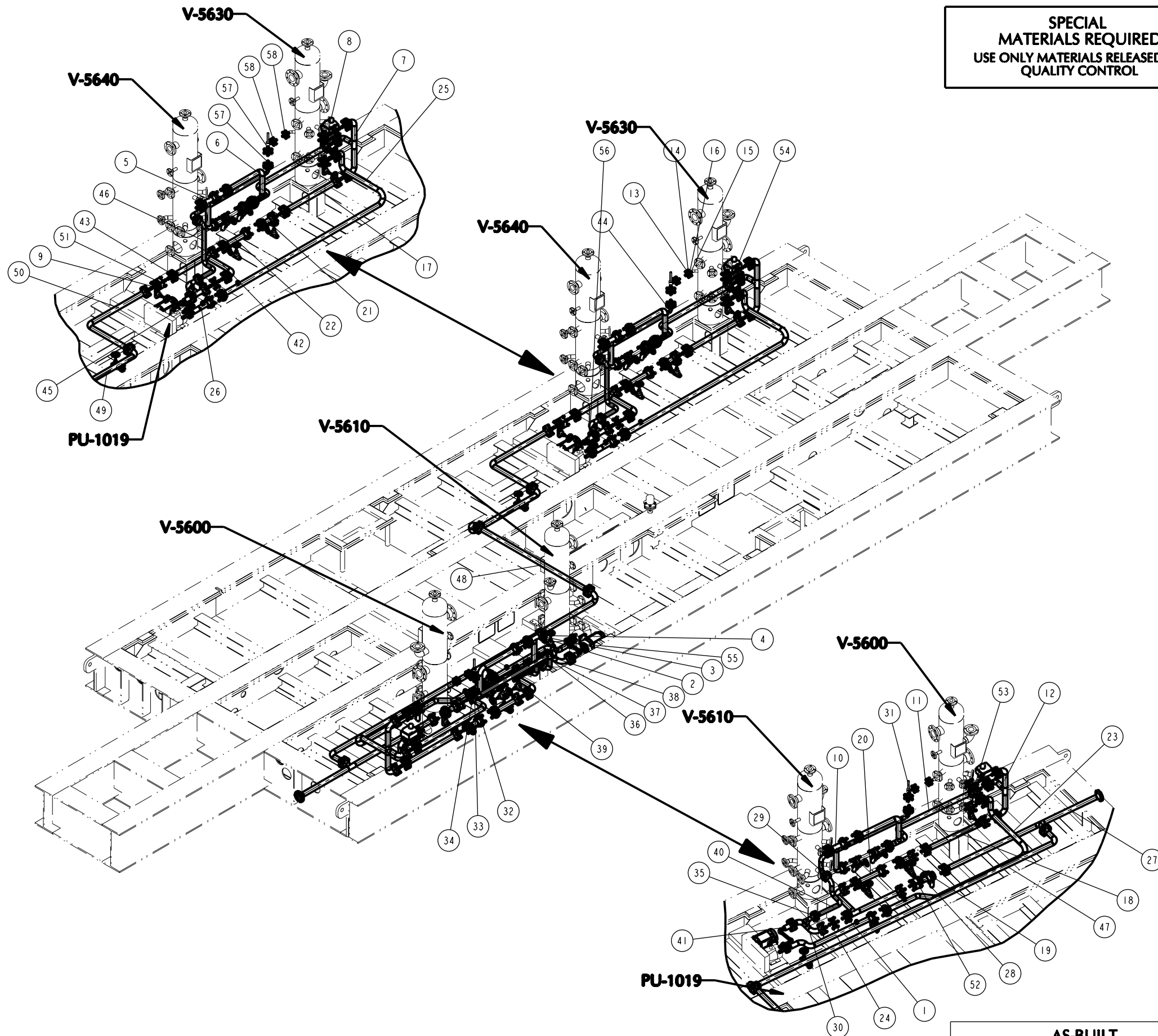
NO.	DATE	REVISION	BY
A	03/27/15	ISSUED FOR APPROVAL	KMB
B	04/24/15	REVISED PER CUSTOMER REVIEW	KMB
0	06/22/15	ISSUED FOR FABRICATION	KMB
1	10/29/15	AS BUILT	KMB



5120 6th STREET N.E.  
CALGARY, ALBERTA  
T2K 4W5  
TEL: 403. 274.6106  
FAX: 403. 730.1644  
www.ngc-td.com

DRAWN BY:	KMB	DATE:	03/18/15
APPROVED BY:	KDM	DATE:	03/18/15
JOB NO.:	17095-NC	PART NO.:	MODULE 56
TITLE:	GENERAL ARRANGEMENT FINAL DISCHARGE / PSV HEADER		
END USER:	BROOKS RANGE PETROLEUM MUSTANG PAD, PRUDHOE BAY, ALASKA		
SCALE	DWG. NO.	SHEET 7 OF 10	REV
NTS	17095-500		1

THIS DRAWING IS THE EXCLUSIVE PROPERTY OF  
NGC COMPRESSION SOLUTIONS LTD., AND CANNOT BE  
REPRODUCED OR DISTRIBUTED WITHOUT THE  
PERMISSION OF NGC COMPRESSION SOLUTIONS LTD.



SPECIAL  
MATERIALS REQUIRED  
USE ONLY MATERIALS RELEASED BY  
QUALITY CONTROL

AS-BUILT

BY: \_\_\_\_\_  
DATE: \_\_\_\_\_

ITEM	PART #	QTY.	UOM	DESCRIPTION
1	GROUP	56	EA	GSKT, 2"-150CL GREY, 87M STUD 5/8"x3-1/2", 2HM NUT
2	808276	1	EA	GASKET,FLEXITALLIC (LSI),2"-150CL
3	801938	4	EA	STUD, 5/8-11TPI x 3 1/2" LG, 87M
4	700695	8	EA	HEX, NUT, 5/8" 2HM
5	17095-681	1	EA	SPOOL FROM V-5610 DUMP - TO SPOOL 683
6	17095-683	1	EA	SPOOL FROM SPOOL 681 - TO SPOOL 685
7	17095-685	1	EA	SPOOL FROM SPOOL 683 & V-5630 DUMP - TO SPOOL 682
8	808276	23	EA	GASKET,FLEXITALLIC (LSI),2"-150CL
9	17095-653	10	EA	SPOOL 2-150CL BLEED RING ASSEMBLY -
10	17095-686	1	EA	SPOOL FROM V-5640 DUMP - TO SPOOL 688
11	17095-688	1	EA	SPOOL FROM SPOOL 686 - TO SPOOL 690
12	17095-690	1	EA	SPOOL FROM SPOOL 688 & V-5600 DUMP - TO SPOOL 687
13	GROUP	6	EA	GSKT, 1"-150CL GREY, 87M STUD 1/2"x2-1/2", 2HM NUT
14	808287	1	EA	GASKET,FLEXITALLIC (LSI),1"-150CL
15	802994	4	EA	STUD, 1/2-13TPI x 2 1/2" LG, 87M
16	700694	8	EA	HEX, NUT, 1/2" 2HM
17	17095-682	1	EA	SPOOL FROM SPOOL 678 - TO SPOOL 685
18	17095-687	1	EA	SPOOL FROM SPOOL 690 - TO SPOOL 676
19	17095-676	1	EA	SPOOL FROM SPOOL 687 - TO SPOOL 677
20	17095-677	1	EA	SPOOL FROM SPOOL 676 - TO SPOOL 712
21	17095-678	1	EA	SPOOL FROM SPOOL 682 - TO SPOOL 679
22	17095-679	1	EA	SPOOL FROM SPOOL 678 - TO SPOOL 718
23	17095-680	1	EA	SPOOL FROM V-5600 DRAIN - TO SPOOL 701
24	17095-701	1	EA	SPOOL FROM SPOOL 680 - TO PU-5600 INLET
25	17095-707	1	EA	SPOOL FROM V-5630 DUMP - TO SPOOL 708
26	17095-708	1	EA	SPOOL FROM SPOOL 707 - TO PU-5630 INLET
27	17095-709	1	EA	SPOOL FROM SPOOL 711 - TO SCRUBBER DRAIN SKID EDGE (D)
28	17095-711	1	EA	SPOOL FROM SPOOL 712 - TO SPOOL 709
29	17095-712	1	EA	SPOOL FROM SPOOL 677 & 713 - TO SPOOL 711
30	17095-713	1	EA	SPOOL FROM SPOOL 716 - TO SPOOL 712 & 715
31	GROUP	4	EA	GSKT, 1"-300CL GREY, 87M STUD 5/8"x3", 2HM NUT
32	808288	1	EA	GASKET,FLEXITALLIC (CGI),1"-3/4/600CL
33	803758	4	EA	STUD, 5/8-11TPI x 3" LG, 87M
34	700695	8	EA	HEX, NUT, 5/8" 2HM
35	GROUP	4	EA	GSKT, 1-1/2"-150CL GREY, 87M STUD 1/2"x3", 2HM NUT
36	808275	1	EA	GASKET,FLEXITALLIC (LSI),1-1/2"-150CL
37	803756	4	EA	STUD, 1/2-13TPI x 3" LG, 87M
38	700694	8	EA	HEX, NUT, 1/2" 2HM
39	17095-714	1	EA	SPOOL FROM SPOOL 715 - TO PSV-5605 INLET
40	17095-715	1	EA	SPOOL FROM SPOOL 716 - TO SPOOL 714
41	17095-716	1	EA	SPOOL FROM PU-5600 OUTLET - TO SPOOL 713
42	17095-718	1	EA	SPOOL FROM SPOOL 679 & 719 - TO SPOOL 726
43	17095-719	1	EA	SPOOL FROM SPOOL 721 - TO SPOOL 718 & 722
44	17095-720	1	EA	SPOOL FROM SPOOL 722 - TO PSV-5635
45	17095-721	1	EA	SPOOL FROM PU-5630 OUTLET - TO SPOOL 719
46	17095-722	1	EA	SPOOL FROM SPOOL 719 - TO SPOOL 720
47	17095-723	1	EA	SPOOL FROM SPOOL 724 - TO SPOOL 709
48	17095-724	1	EA	SPOOL FROM SPOOL 725 - TO SPOOL 723
49	17095-725	1	EA	SPOOL FROM SPOOL 726 - TO SPOOL 724
50	17095-726	1	EA	SPOOL FROM SPOOL 718 - TO SPOOL 725
51	806722	4	EA	STUD, 5/8-11TPI x 8" LG, 87M
52	801943	4	EA	STUD, 5/8-11TPI x 6" LG, 87M
53	700695	80	EA	HEX, NUT, 5/8" 2HM
54	801941	32	EA	STUD, 5/8-11TPI x 5" LG, 87M
55	17095-654	1	EA	SPOOL FROM PU-1019 - TO SPOOL 701
56	17095-655	1	EA	SPOOL FROM PU-1019 - TO SPOOL 708
57	805572	4	EA	FLANGE ISOLATION KIT 1-300CL G-10 LINEBACKER
58	804687	4	EA	FLANGE ISOLATION KIT 1-150CL G-10 LINEBACKER

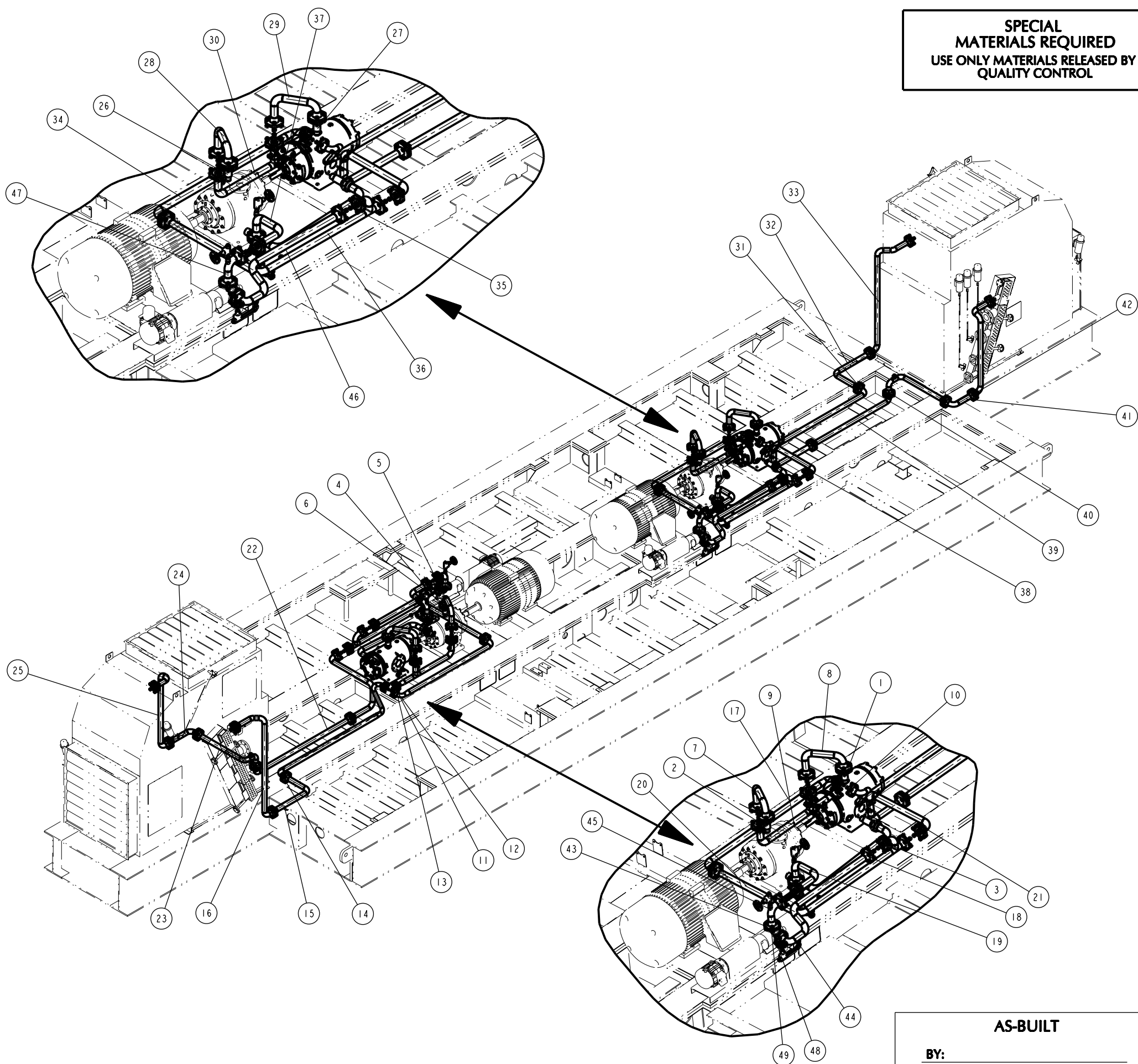
NO.	DATE	REVISION	BY
A	03/27/15	ISSUED FOR APPROVAL	KMB
B	04/24/15	REVISED PER CUSTOMER REVIEW	KMB
0	06/22/15	ISSUED FOR FABRICATION	KMB
1	10/29/15	AS BUILT	KMB



5120 6th STREET N.E.  
CALGARY, ALBERTA  
T2K 4W5  
TEL: 403. 274.6106  
FAX: 403. 730.1644  
www.ngc-ltd.com

DRAWN BY:	KMB	DATE:	03/18/15
APPROVED BY:	KDM	DATE:	03/18/15
JOB NO.:	17095-NC	PART NO.:	MODULE 56
TITLE:	GENERAL ARRANGEMENT SCRUBBER DRAINS		
END USER:	BROOKS RANGE PETROLEUM MUSTANG PAD, PRUDHOE BAY, ALASKA		
SCALE	DWG. NO.	SHEET 6 OF 10	REV
NTS	17095-500		1

THIS DRAWING IS THE EXCLUSIVE PROPERTY OF  
NGC COMPRESSION SOLUTIONS LTD., AND CANNOT BE  
REPRODUCED OR DISTRIBUTED WITHOUT THE  
PERMISSION OF NGC COMPRESSION SOLUTIONS LTD.



SPECIAL  
MATERIALS REQUIRED  
USE ONLY MATERIALS RELEASED BY  
QUALITY CONTROL

AS-BUILT

BY: \_\_\_\_\_  
DATE: \_\_\_\_\_

ITEM	PART #	QTY.	UOM	DESCRIPTION
1	17095-800	1	EA	SPOOL FROM C-5600 WATER OUTLET - TO SPOOL 804
2	17095-801	1	EA	SPOOL FROM C-5610 WATER OUTLET - TO SPOOL 803
3	GROUP	44	EA	GSKT, 2"-150CL GREY, B7M STUD 5/8"x3-1/2", 2HM NUT
4	808276	1	EA	GASKET,FLEXITALLIC (LSI),2"-150CL
5	801938	4	EA	STUD, 5/8-11TPI x 3 1/2" LG, B7M
6	700695	8	EA	HEX, NUT, 5/8" 2HM
7	17095-803	1	EA	SPOOL FROM SPOOL 801 - TO SPOOL 805
8	17095-804	1	EA	SPOOL FROM SPOOL 800 - TO SPOOL 805
9	17095-805	1	EA	SPOOL FROM SPOOL 803 & 804 - TO TV-8004
10	GROUP	6	EA	GSKT, 1-1/2"-150CL GREY, B7M STUD 1/2"x3", 2HM NUT
11	808275	1	EA	GASKET,FLEXITALLIC (LSI),1-1/2"-150CL
12	803756	4	EA	STUD, 1/2-13TPI x 3" LG, B7M
13	700694	8	EA	HEX, NUT, 1/2" 2HM
14	17095-806	1	EA	SPOOL FROM TV 8004 - TO SPOOL 807
15	17095-807	1	EA	SPOOL FROM SPOOL 806 - TO SPOOL 808
16	17095-808	1	EA	SPOOL FROM SPOOL 807 - TO COOLER AUX WATER INLET
17	17095-809	1	EA	SPOOL FROM SPOOL 812 - TO TV-8004
18	17095-810	1	EA	SPOOL FROM SPOOL 811 - TO C-5600 & C-5610 WATER INLET
19	17095-811	1	EA	SPOOL FROM SPOOL 836 - TO SPOOL 810
20	17095-812	1	EA	SPOOL FROM SPOOL 813 - TO SPOOL 809 & 835
21	17095-813	1	EA	SPOOL FROM SPOOL 814 - TO SPOOL 812
22	17095-814	1	EA	SPOOL FROM SPOOL 815 - TO SPOOL 813
23	17095-815	1	EA	SPOOL FROM SPOOL 816 - TO SPOOL 814
24	17095-816	1	EA	SPOOL FROM SPOOL 817 - TO SPOOL 815
25	17095-817	1	EA	SPOOL FROM COOLER 5600 AUX WATER OUTLET - TO SPOOL 816
26	17095-819	1	EA	SPOOL FROM C-5640 WATER OUTLET - TO SPOOL 820
27	17095-818	1	EA	SPOOL FROM C-5630 WATER OUTLET - TO SPOOL 821
28	17095-820	1	EA	SPOOL FROM SPOOL 819 - TO SPOOL 822
29	17095-821	1	EA	SPOOL FROM SPOOL 818 - TO SPOOL 822
30	17095-822	1	EA	SPOOL FROM SPOOL 814 & 819 - TO TV-8004
31	17095-823	1	EA	SPOOL FROM TV-8004 - TO SPOOL 824
32	17095-824	1	EA	SPOOL FROM SPOOL 823 - TO SPOOL 825
33	17095-825	1	EA	SPOOL FROM SPOOL 824 - TO COOLER 5610 AUX WATER INLET
34	17095-826	1	EA	SPOOL FROM SPOOL 829 - TO TV-8004
35	17095-827	1	EA	SPOOL FROM SPOOL 829 - TO C-5630 & C-5640 WATER INLET
36	17095-828	1	EA	SPOOL FROM SPOOL 830 - TO SPOOL 826 & 837
37	17095-829	1	EA	SPOOL FROM SPOOL 838 - TO SPOOL 827
38	17095-830	1	EA	SPOOL FROM SPOOL 831 - TO SPOOL 829
39	17095-831	1	EA	SPOOL FROM SPOOL 832 - TO SPOOL 830
40	17095-832	1	EA	SPOOL FROM SPOOL 833 - TO SPOOL 831
41	17095-833	1	EA	SPOOL FROM SPOOL 834 - TO SPOOL 832
42	17095-834	1	EA	SPOOL FROM COOLER 5610 AUX WATER OUTLET - TO SPOOL 833
43	801180	4	EA	GASKET,FF FULL,2"-125/150CL, 1/16" THK.,
44	17095-835	1	EA	SPOOL FROM SPOOL 812 - TO P-8060 INLET
45	17095-836	1	EA	SPOOL FROM C-5640 OUTLET - TO SPOOL 811
46	17095-837	1	EA	SPOOL FROM SPOOL 828 - TO P-8060 INLET
47	17095-838	1	EA	SPOOL FROM P-8060 OUTLET - TO SPOOL 829
48	801938	16	EA	STUD, 5/8-11TPI x 3 1/2" LG, B7M
49	700695	32	EA	HEX, NUT, 5/8" 2HM

NO.	DATE	REVISION	BY
A	03/27/15	ISSUED FOR APPROVAL	KMB
B	04/24/15	REVISED PER CUSTOMER REVIEW	KMB
0	06/22/15	ISSUED FOR FABRICATION	KMB
1	10/29/15	AS BUILT	KMB

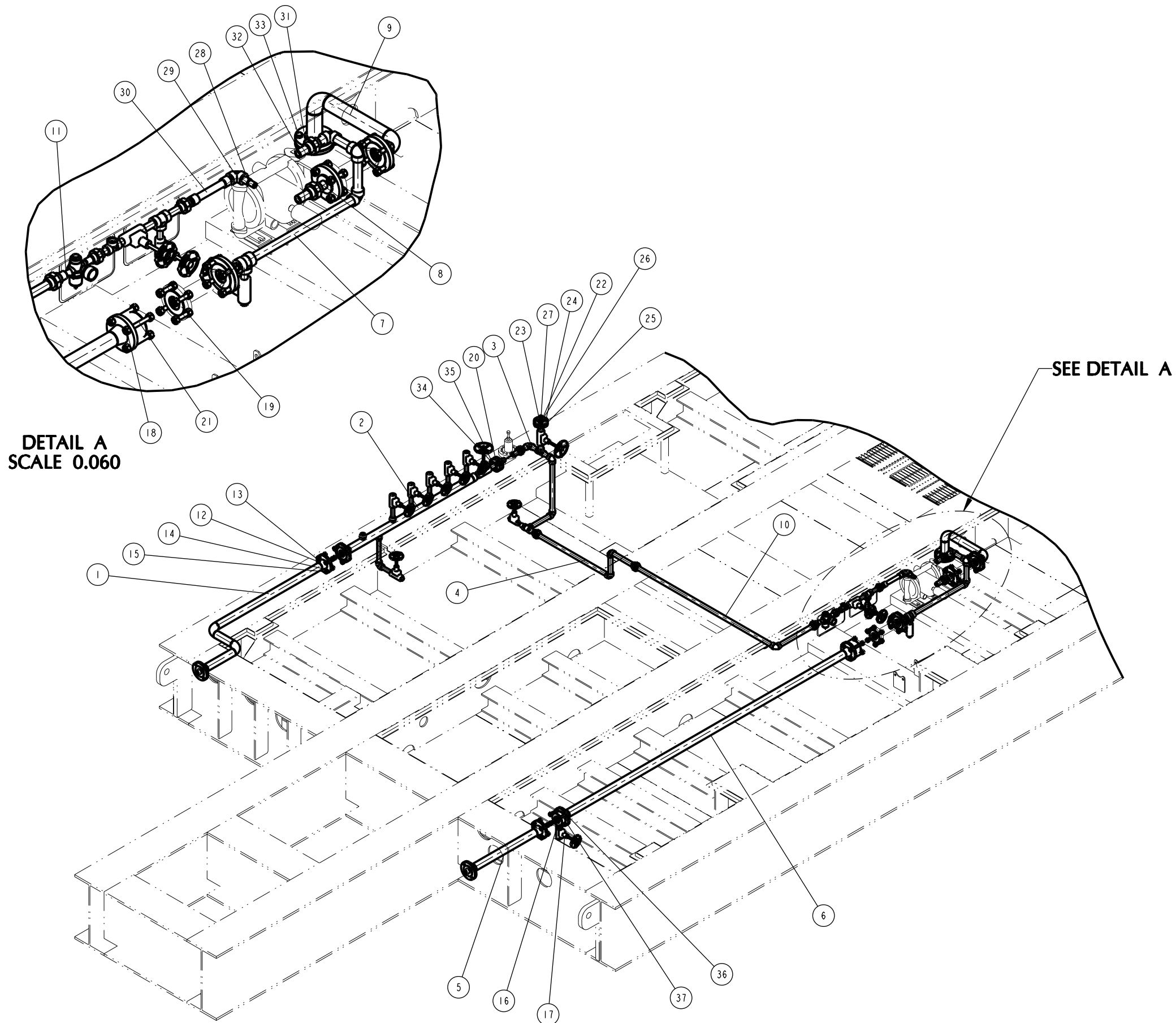


5120 6th STREET N.E.  
CALGARY, ALBERTA  
T2K 4W5  
TEL: 403. 274.6106  
FAX: 403. 730.1644  
www.ngc-ltd.com

DRAWN BY:	KMB	DATE:	03/18/15
APPROVED BY:	KDM	DATE:	03/18/15
JOB NO.:	17095-NC	PART NO.:	MODULE 56
TITLE:	GENERAL ARRANGEMENT COMPRESSOR UTILITIES		
END USER:	BROOKS RANGE PETROLEUM MUSTANG PAD, PRUDHOE BAY, ALASKA		
SCALE	DWG. NO.	SHEET 9 OF 10	REV
NTS	17095-500		1

THIS DRAWING IS THE EXCLUSIVE PROPERTY OF  
NGC COMPRESSION SOLUTIONS LTD., AND CANNOT BE  
REPRODUCED OR DISTRIBUTED WITHOUT THE  
PERMISSION OF NGC COMPRESSION SOLUTIONS LTD.





ITEM	PART #	QTY.	UOM	DESCRIPTION
1	17095-840	1	EA	SPOOL FROM INSTRUMENT AIR INLET - TO SPOOL 841
2	17095-841	1	EA	SPOOL FROM SPOOL 840 - TO SPOOL 842
3	17095-842	1	EA	SPOOL FROM SPOOL 841 - TO SPOOL 843
4	17095-843	1	EA	SPOOL FROM SPOOL 842 - TO SPOOL 849
5	17095-844	1	EA	SPOOL FROM SPOOL 845 - TO SUMP DRAIN SKID EDGE
6	17095-845	1	EA	SPOOL FROM SPOOL 846 - TO SPOOL 844
7	17095-846	1	EA	SPOOL FROM PU-8160 OUTLET - TO SPOOL 845
8	17095-847	1	EA	SPOOL FROM SPOOL 848 - TO PU-8160 INLET
9	17095-848	1	EA	SPOOL FROM SUMP TANK - TO SPOOL 847
10	17095-849	1	EA	SPOOL FROM SPOOL 843 - TO SPOOL 850
11	17095-850	1	EA	SPOOL FROM SPOOL 849 - TO PU-8160 AIR INLET
12	GROUP	7	EA	GSKT, 2"-150CL GREY, B7M STUD 5/8"x3-1/2", 2HM NUT
13	808276	1	EA	GASKET,FLEXITALLIC (LSI),2"-150CL
14	801938	4	EA	STUD, 5/8-11TPI x 3 1/2" LG, B7M
15	700695	8	EA	HEX, NUT, 5/8" 2HM
16	808276	4	EA	GASKET,FLEXITALLIC (LSI),2"-150CL
17	17095-653	1	EA	SPOOL 2-150CL BLEED RING ASSEMBLY -
18	700695	8	EA	HEX, NUT, 5/8" 2HM
19	808203	2	EA	2"-150# RF X 10 F-F FLEX CONN.
20	808287	2	EA	GASKET,FLEXITALLIC (LSI),1"-150CL
21	801943	4	EA	STUD, 5/8-11TPI x 6" LG, B7M
22	GROUP	1	EA	GSKT, 1"-150CL GREY, B7M STUD 1/2"x2-1/2", 2HM NUT
23	808287	1	EA	GASKET,FLEXITALLIC (LSI),1"-150CL
24	802994	4	EA	STUD, 1/2-13TPI x 2 1/2" LG, B7M
25	700694	8	EA	HEX, NUT, 1/2" 2HM
26	802902	1	EA	FLANGE,RF RED THD,1-150CL x 1/2 NPT
27	808155	1	EA	PLUG, THD HEX, 1/2"-3000/6000CL, SA350-LF2
28	808224	1	EA	SWAGE NIPPLE, CONC., 3/4" x 1/2"
29	805246	1	EA	ELBOW, 90 THD, 3/4"-3000CL
30	808204	1	EA	FLEX HOSE, 3/4" X 10" LG (7213211-012-024024-10)
31	808217	1	EA	FLANGE,RF THD,2-150CL
32	808215	1	EA	FLANGE, PLATE, 2" 125/150CL FF, 2.50" ID, .5 THK
33	802825	4	EA	CAPSCREW, HEX, 5/8-UNC x 1-1/2", GR5
34	700694	8	EA	HEX, NUT, 1/2" 2HM
35	803756	4	EA	STUD, 1/2-13TPI x 3" LG, B7M
36	700695	8	EA	HEX, NUT, 5/8" 2HM
37	801941	4	EA	STUD, 5/8-11TPI x 5" LG, B7M

SPECIAL  
MATERIALS REQUIRED  
USE ONLY MATERIALS RELEASED BY  
QUALITY CONTROL

NO.	DATE	REVISION	BY
A	03/27/15	ISSUED FOR APPROVAL	KMB
B	04/24/15	REVISED PER CUSTOMER REVIEW	KMB
0	06/22/15	ISSUED FOR FABRICATION	KMB
1	10/29/15	AS BUILT	KMB



5120 6th STREET N.E.  
CALGARY, ALBERTA  
T2K 4W5  
TEL: 403. 274.6106  
FAX: 403. 730.1644  
www.ngc-ltd.com

DRAWN BY:	KMB	DATE:	03/18/15
APPROVED BY:	KDM	DATE:	03/18/15
JOB NO.:	17095-NC	PART NO.:	MODULE 56
TITLE:	GENERAL ARRANGEMENT INSTRUMENT AIR & SUMP PUMP UTILITIES		
END USER:	BROOKS RANGE PETROLEUM MUSTANG PAD, PRUDHOE BAY, ALASKA		
SCALE	DWG. NO.	SHEET 10 OF 10	REV
NTS	17095-500		1

THIS DRAWING IS THE EXCLUSIVE PROPERTY OF  
NGC COMPRESSION SOLUTIONS LTD., AND CANNOT BE  
REPRODUCED OR DISTRIBUTED WITHOUT THE  
PERMISSION OF NGC COMPRESSION SOLUTIONS LTD.

AS-BUILT

BY: \_\_\_\_\_  
DATE: \_\_\_\_\_