

*NOTE: SKID SIDE HIDDEN FOR CLARITY.

AS-BUILT

BY: _____

DATE: _____

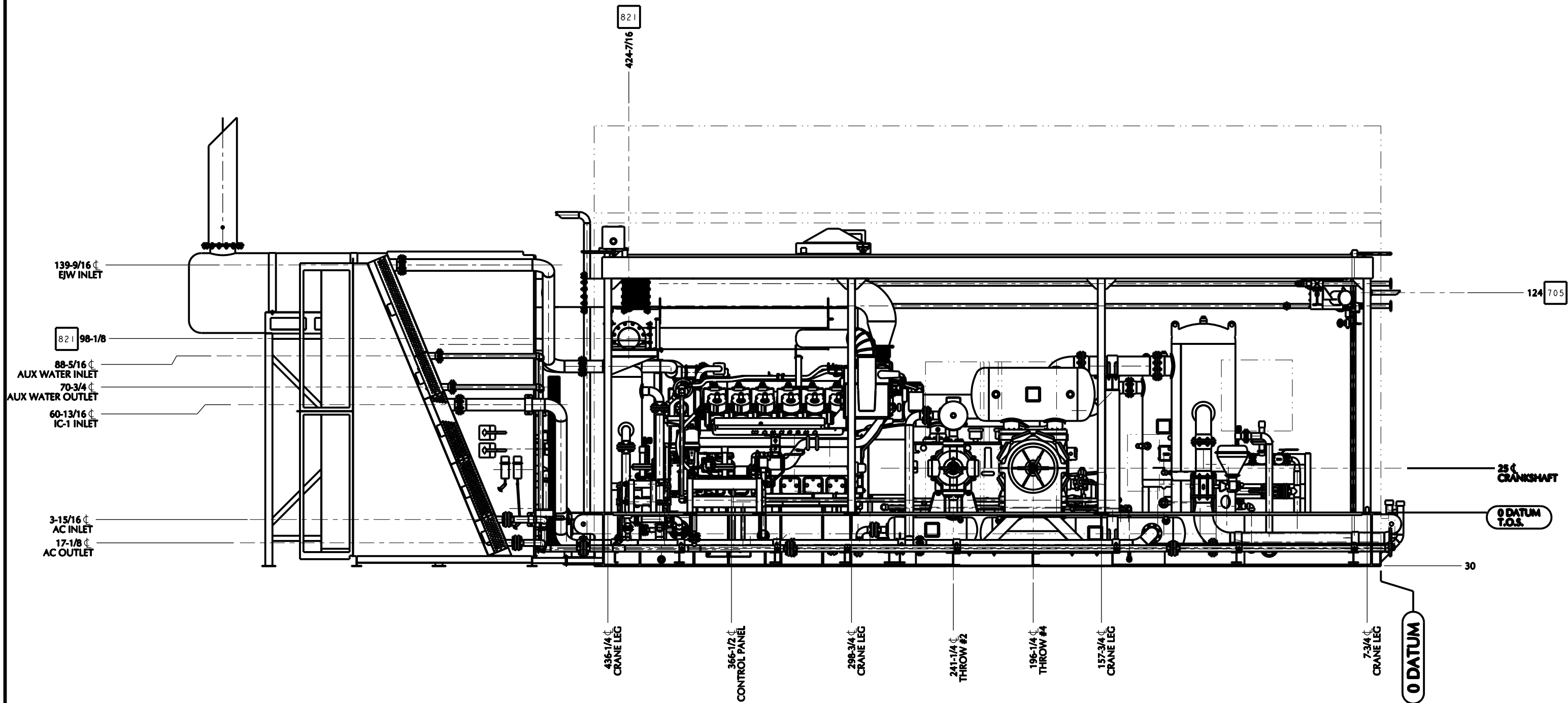
NO.	DATE	REVISION	BY
A	10/10/14	ISSUED FOR APPROVAL	KMB
0	11/05/14	ISSUED FOR FABRICATION	KMB
1	12/30/14	ADDED STAGE #3 SUCTION PSV & CV-592	KMB
2	05/11/15	AS BUILT	KMB
3			



5120 6th STREET N.E.
CALGARY, ALBERTA
T2K 4W5
TEL: 403. 274.6106
FAX: 403. 730.1644
www.ngc-ltd.com

DRAWN BY:	KMB	DATE:	10/10/14
APPROVED BY:	KDM	DATE:	10/09/14
JOB NO.:	17089-NC	PART NO.:	-
TITLE:	GENERAL ARRANGEMENT (THROW #1 & #3 SIDE VIEW)		
END USER:	STEEL REEF INFRASTRUCTURE CORP. PORTAL, SASKATCHEWAN - LSD: 01-09-001-04-W2M		
SCALE	DWG. NO.	SHEET 2 OF 10	REV
NTS	17089-GA		2

THIS DRAWING IS THE EXCLUSIVE PROPERTY OF
NGC COMPRESSION SOLUTIONS LTD., AND CANNOT BE
REPRODUCED OR DISTRIBUTED WITHOUT THE
PERMISSION OF NGC COMPRESSION SOLUTIONS LTD.



*NOTE: SKID SIDE HIDDEN FOR CLARITY.

AS-BUILT

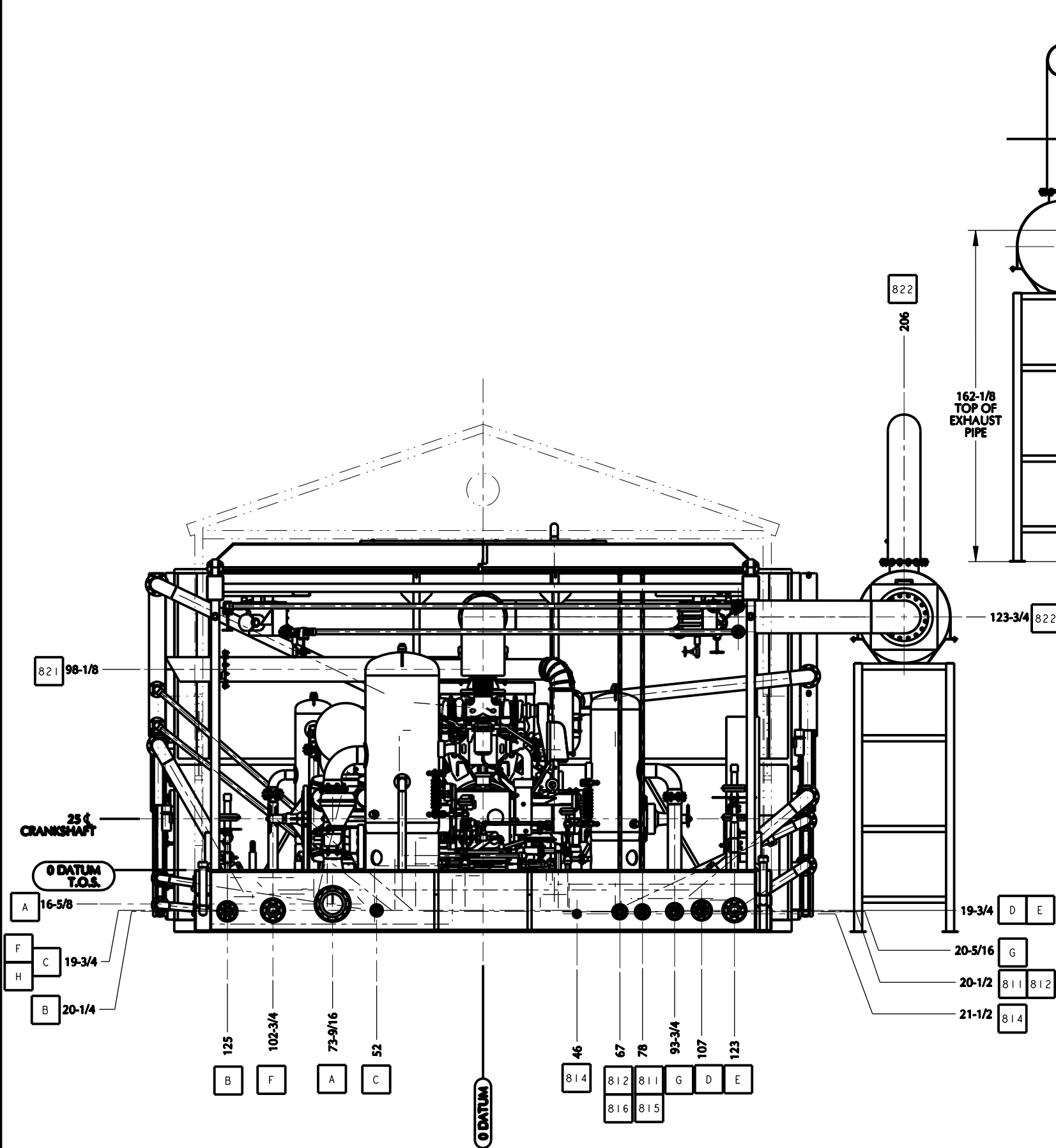
BY: _____

DATE: _____

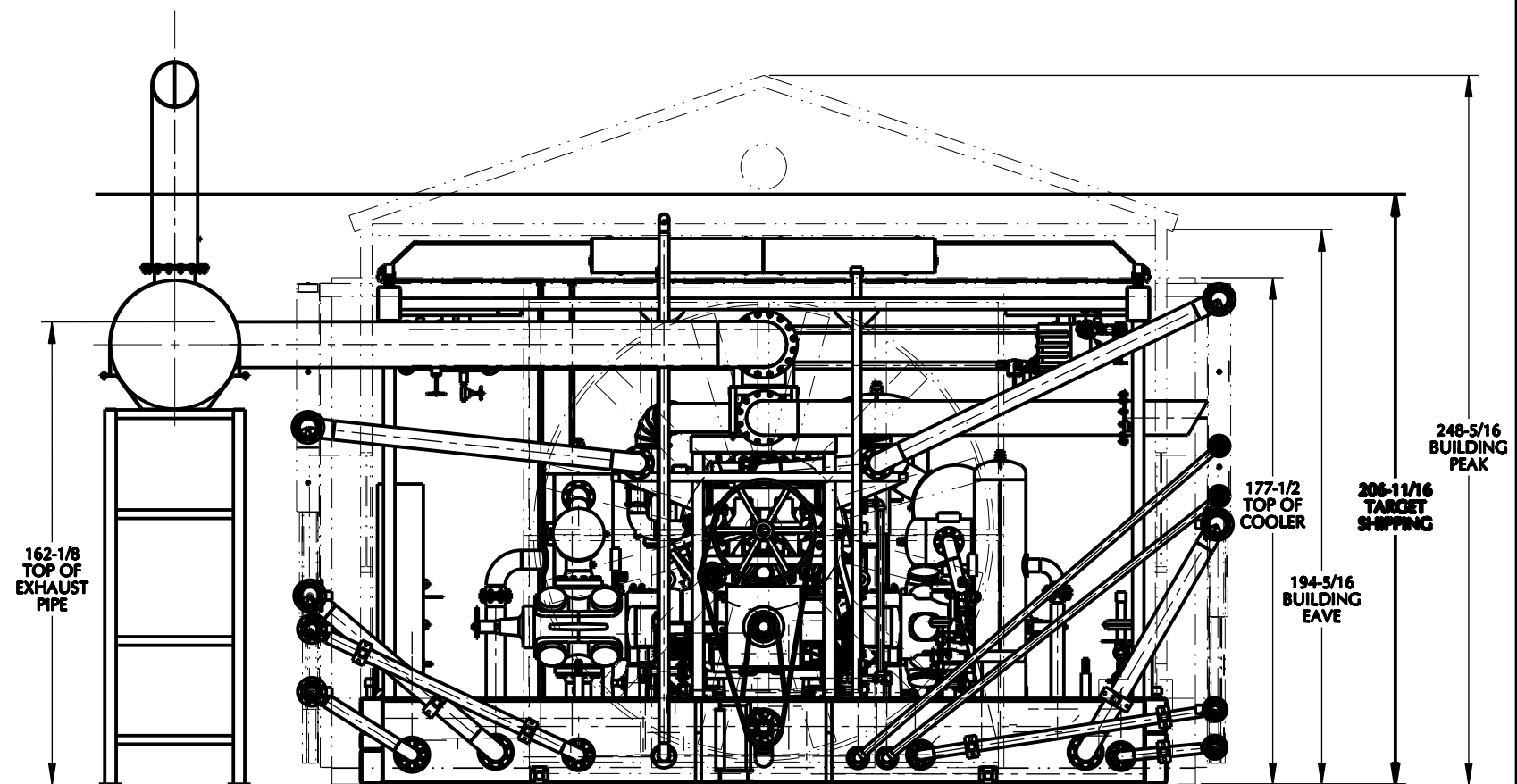
NO.	DATE	REVISION	BY
A	10/10/14	ISSUED FOR APPROVAL	KMB
0	11/05/14	ISSUED FOR FABRICATION	KMB
1	12/30/14	ADDED STAGE #3 SUCTION PSV & CV-592	KMB
2	05/11/15	AS BUILT	KMB
3			

NGC	5120 6th STREET N.E. CALGARY, ALBERTA T2K 4W5	DRAWN BY: KMB	DATE: 10/10/14
	TEL: 403. 274.6106 FAX: 403. 730.1644 www.ngc-ltd.com	APPROVED BY: KDM	DATE: 10/09/14
		JOB NO.: 17089-NC	PART NO.: -
		TITLE: GENERAL ARRANGEMENT (THROW #2 & #4 SIDE VIEW)	
		END USER: STEEL REEF INFRASTRUCTURE CORP. PORTAL, SASKATCHEWAN - LSD: 01-09-001-04-W2M	
SCALE: NTS	DWG. NO.: 17089-GA	SHEET 3 OF 10	REV: 2

THIS DRAWING IS THE EXCLUSIVE PROPERTY OF NGC COMPRESSION SOLUTIONS LTD., AND CANNOT BE REPRODUCED OR DISTRIBUTED WITHOUT THE PERMISSION OF NGC COMPRESSION SOLUTIONS LTD.



COMPRESSOR END VIEW



COOLER END VIEW
(COOLER TRANSPARENT FOR CLARITY)

AS-BUILT

BY: _____
DATE: _____

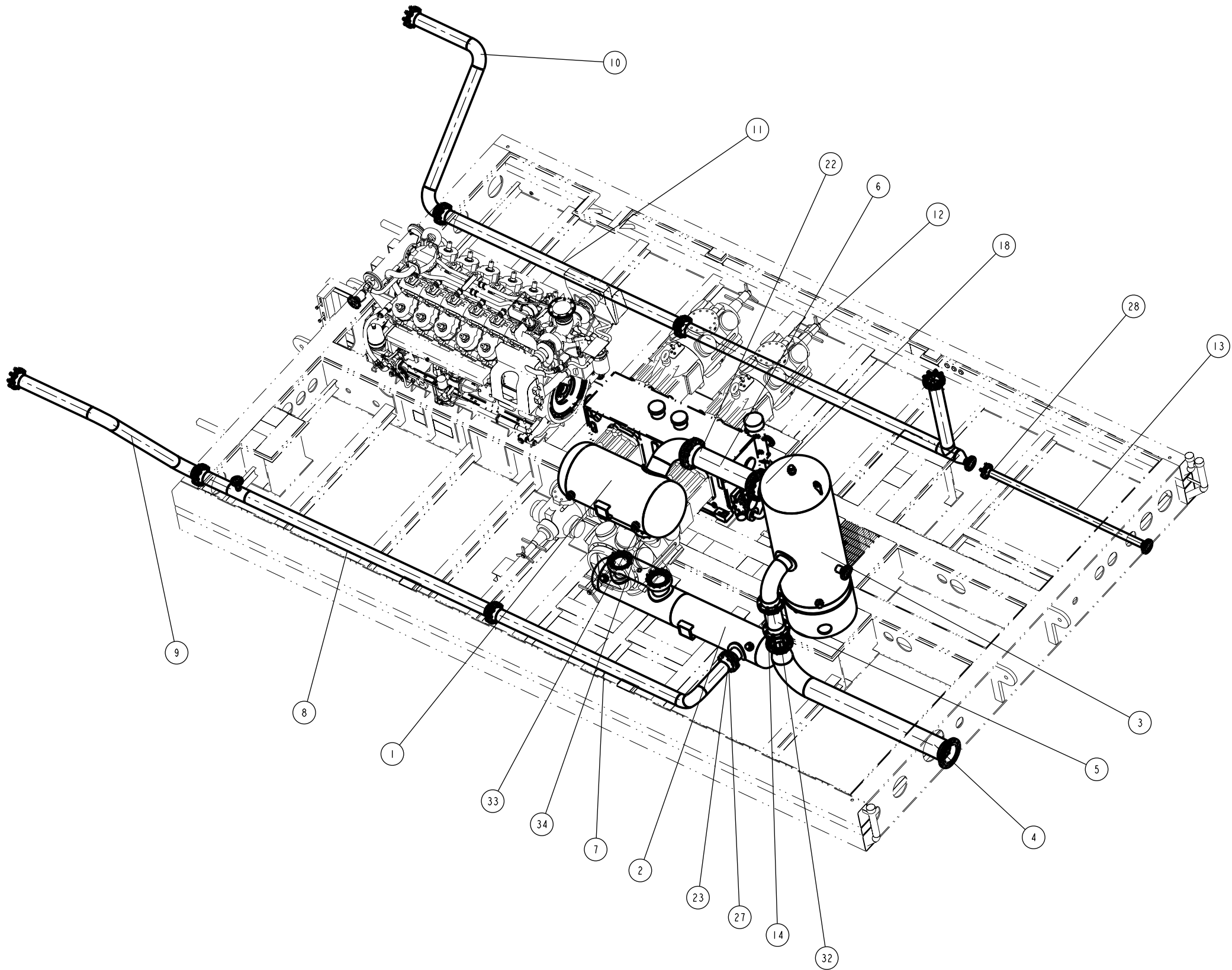
NO.	DATE	REVISION	BY
A	10/10/14	ISSUED FOR APPROVAL	KMB
0	11/05/14	ISSUED FOR FABRICATION	KMB
1	12/30/14	ADDED STAGE #3 SUCTION PSV & CV-592	KMB
2	05/11/15	AS BUILT	KMB
3			



5120 6th STREET N.E.
CALGARY, ALBERTA
T2K 4W5
TEL: 403. 274.6106
FAX: 403. 730.1644
www.ngc-ltd.com

DRAWN BY:	KMB	DATE:	10/10/14
APPROVED BY:	KDM	DATE:	10/09/14
JOB NO.:	17089-NC	PART NO.:	-
TITLE:	GENERAL ARRANGEMENT (END VIEWS)		
END USER:	STEEL REEF INFRASTRUCTURE CORP. PORTAL, SASKATCHEWAN - LSD: 01-09-001-04-W2M		
SCALE	DWG. NO.	SHEET 4 OF 10	REV
NTS	17089-GA		2

THIS DRAWING IS THE EXCLUSIVE PROPERTY OF
NGC COMPRESSION SOLUTIONS LTD., AND CANNOT BE
REPRODUCED OR DISTRIBUTED WITHOUT THE
PERMISSION OF NGC COMPRESSION SOLUTIONS LTD.




ITEM	PART #	QTY.	UOM	DESCRIPTION
1	17089-233	1	EA	STAGE 1 SUCTION BOTTLE, 30 OD x 50 S/S, 215 MAWP
2	17089-234	1	EA	STAGE 1 DISCHARGE BOTTLE, 18 OD x 102 S/S, 215 MAWP
3	17089-231	1	EA	STAGE 1 SCRUBBER, 36 OD x 72 S/S, 215 MAWP
4	17089-601	1	EA	SPOOL FROM PROCESS GAS INLET - TO SPOOL 602
5	17089-602	1	EA	SPOOL FROM SPOOL 601 - TO V-201 INLET
6	17089-603	1	EA	SPOOL FROM V-201 OUTLET - TO V-203 INLET
7	17089-604	1	EA	SPOOL FROM V-204 OUTLET - TO SPOOL 605
8	17089-605	1	EA	SPOOL FROM SPOOL 604 - TO SPOOL 606
9	17089-606	1	EA	SPOOL FROM SPOOL 605 - TO COOLER IC-1 INLET
10	17089-639	1	EA	SPOOL FROM COOLER IC-1 OUTLET - TO SPOOL 607
11	17089-607	1	EA	SPOOL FROM SPOOL 639 - TO SPOOL 608
12	17089-608	1	EA	SPOOL FROM SPOOL 607 - TO V-206 INLET
13	17089-609	1	EA	SPOOL FROM PROPANE SUBCOOLER - TO SPOOL 608
14	GROUP	1	EA	GSKT, 8"-150CL GREY, B7M STUD 3/4"x4-1/2", 2HM NUT
15	801246	1	EA	GASKET,FLEXITALLIC (GREY),8"-150CL
16	801947	8	EA	STUD, 3/4-10TPI x 4 1/2" LG, B7M
17	700706	16	EA	HEX, NUT, 3/4" 2HM
18	GROUP	2	EA	GSKT, 10"-150CL GREY, B7M STUD 7/8"x4-1/2", 2HM NUT
19	801252	1	EA	GASKET,FLEXITALLIC (GREY),10"-150CL
20	700157	12	EA	STUD, 7/8-9TPI x 4 1/2" LG, B7
21	700793	24	EA	HEX, NUT, 7/8" 2HM
22	801252	1	EA	GASKET,FLEXITALLIC (GREY),10"-150CL
23	GROUP	8	EA	GSKT, 6"-150CL GREY, B7M STUD 3/4"x4", 2HM NUT
24	700791	1	EA	GASKET,FLEXITALLIC (GREY),6"-150CL
25	801946	8	EA	STUD, 3/4-10TPI x 4" LG, B7M
26	700706	16	EA	HEX, NUT, 3/4" 2HM
27	700058	1	EA	GASKET,FLEXITALLIC (PINK),6"-150CL
28	GROUP	1	EA	GSKT, 3"-150CL GREY, B7M STUD 5/8"x3-1/2", 2HM NUT
29	700785	1	EA	GASKET,FLEXITALLIC (GREY),3"-150CL
30	801938	4	EA	STUD, 5/8-11TPI x 3 1/2" LG, B7M
31	700695	8	EA	HEX, NUT, 5/8" 2HM
32	801246	10	EA	GASKET,FLEXITALLIC (GREY),8"-150CL
33	802564	48	EA	WASHER, LOCK, 1/2", GR8
34	700942	48	EA	CAPSCREW, HEX, 1/2-UNC x 4", GR5
35	806418	8	EA	STUD, 3/4-10TPI x 14 1/2" LG, B7M
36	700706	16	EA	HEX, NUT, 3/4" 2HM

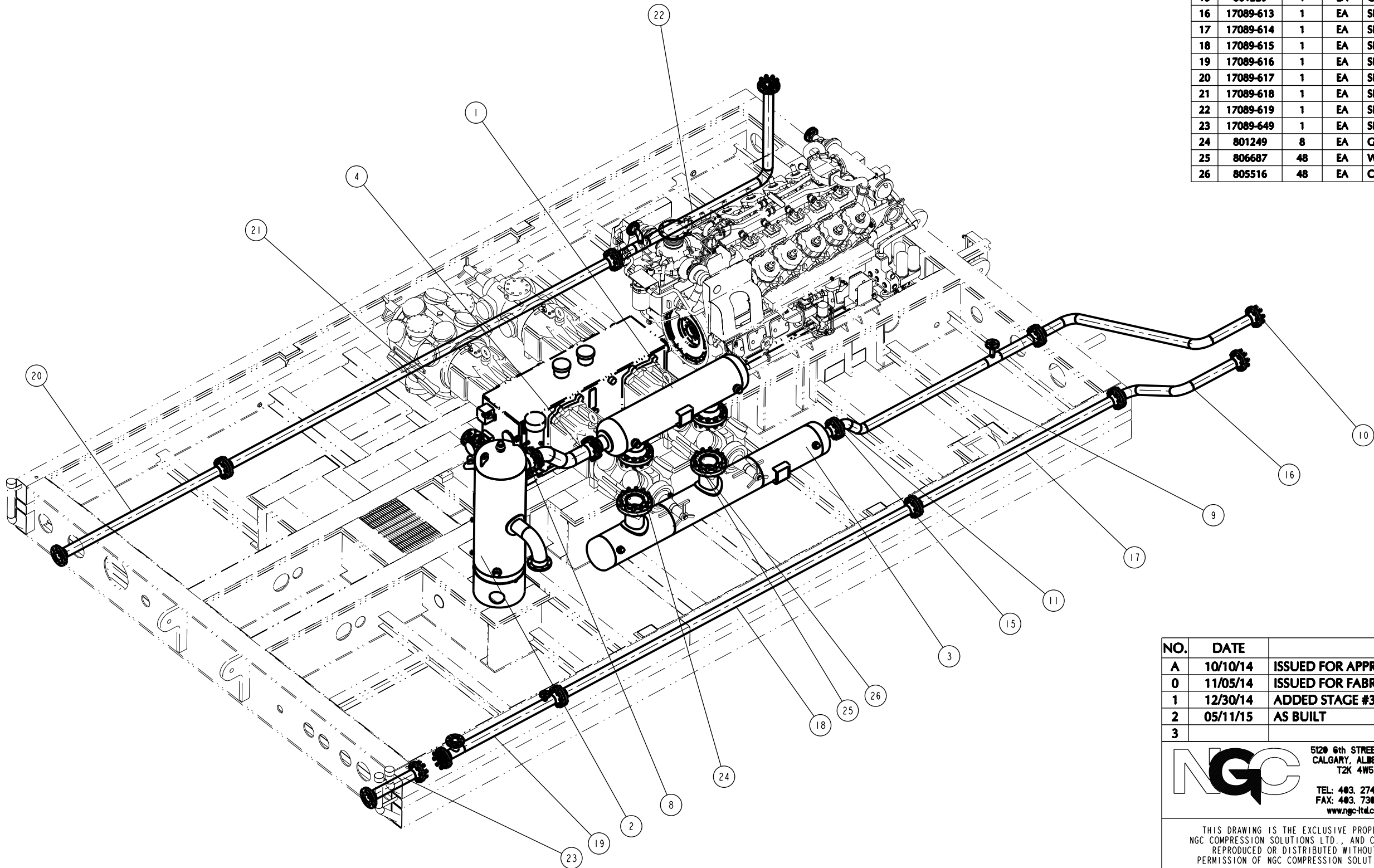
AS-BUILT

BY: _____

DATE: _____


NO.	DATE	REVISION	BY
A	10/10/14	ISSUED FOR APPROVAL	KMB
0	11/05/14	ISSUED FOR FABRICATION	KMB
1	12/30/14	ADDED STAGE #3 SUCTION PSV & CV-592	KMB
2	05/11/15	AS BUILT	KMB
3			

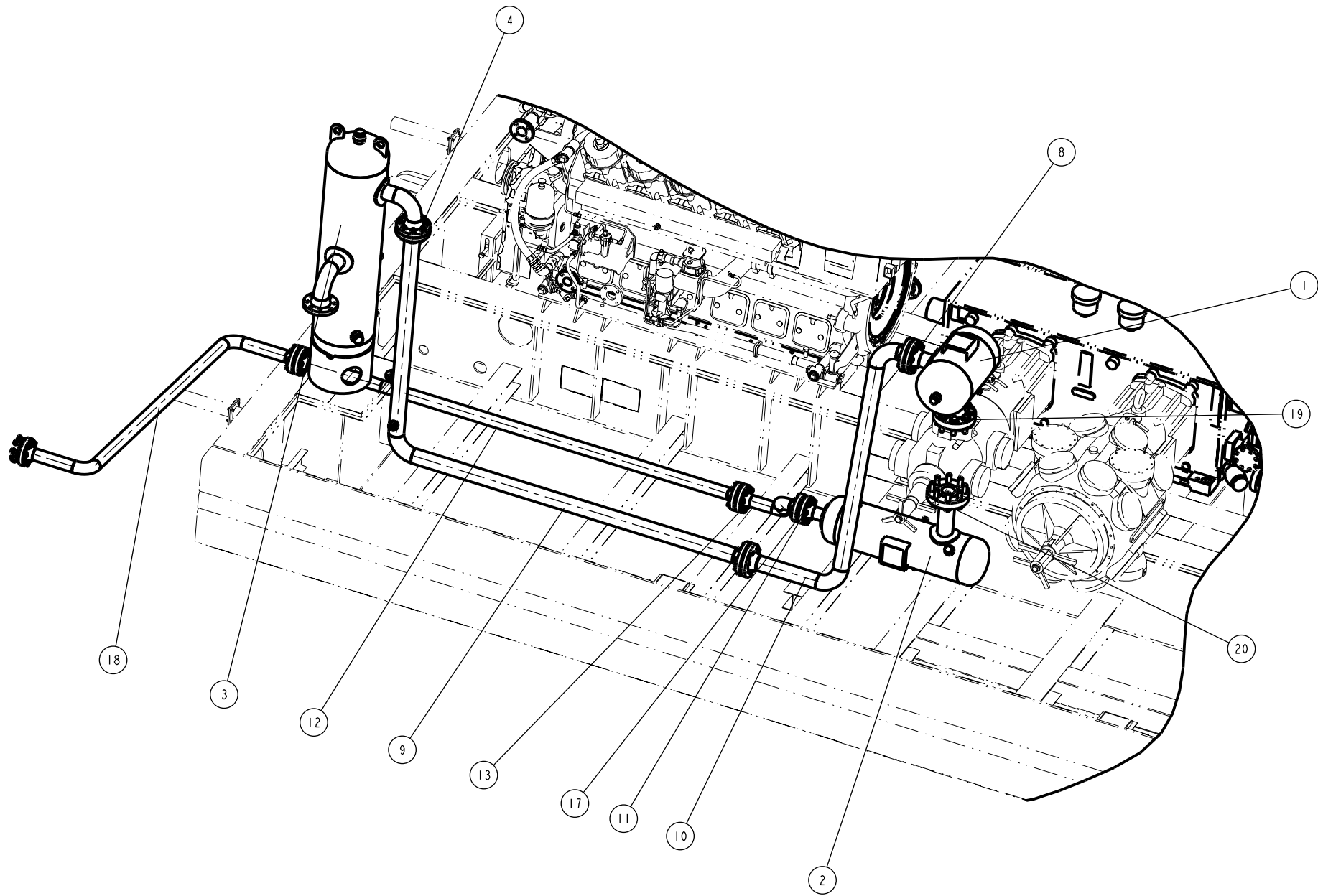
	5120 6th STREET NE. CALGARY, ALBERTA T2K 4W5 TEL: 403. 274.6106 FAX: 403. 730.1644 www.ngc-ltd.com	DRAWN BY:	KMB	DATE:	10/10/14
		APPROVED BY:	KDM	DATE:	10/09/14
		JOB NO.:	17089-NC	PART NO.:	-
		TITLE: GENERAL ARRANGEMENT STAGE ONE			
THIS DRAWING IS THE EXCLUSIVE PROPERTY OF NGC COMPRESSION SOLUTIONS LTD., AND CANNOT BE REPRODUCED OR DISTRIBUTED WITHOUT THE PERMISSION OF NGC COMPRESSION SOLUTIONS LTD.		END USER: STEEL REEF INFRASTRUCTURE CORP. PORTAL, SASKATCHEWAN - LSD: 01-09-001-04-W2M			
		SCALE	DWG. NO.	SHEET 5 OF 10	REV
		NTS	17089-GA		2



ITEM	PART #	QTY.	UOM	DESCRIPTION
1	17089-237	1	EA	STAGE 2 SUCTION BOTTLE, 18 OD x 70 S/S, 215 MAWP
2	17089-236	1	EA	STAGE 2 SCRUBBER, 24 OD x 60 S/S, 215 MAWP
3	17089-238	1	EA	STAGE 2 DISCHARGE BOTTLE, 16 OD x 126 S/S, 645 MAWP
4	GROUP	2	EA	GSKT, 6"-150CL GREY, B7M STUD 3/4"x4", 2HM NUT
5	700791	1	EA	GASKET,FLEXITALLIC (GREY),6"-150CL
6	801946	8	EA	STUD, 3/4-10TPI x 4" LG, B7M
7	700706	16	EA	HEX, NUT, 3/4" 2HM
8	17089-610	1	EA	SPOOL FROM V-206 OUTLET - TO V-207 INLET
9	17089-611	1	EA	SPOOL FROM V-208 OUTLET - TO SPOOL 612
10	17089-612	1	EA	SPOOL FROM SPOOL 611 - COOLER IC-2 INLET
11	GROUP	12	EA	GSKT, 4"-300CL GREY, B7M STUD 3/4"x4-1/2", 2HM NUT
12	801229	1	EA	GASKET,FLEXITALLIC (GREY),4"-300CL
13	801947	8	EA	STUD, 3/4-10TPI x 4 1/2" LG, B7M
14	700706	16	EA	HEX, NUT, 3/4" 2HM
15	801229	1	EA	GASKET,FLEXITALLIC (GREY),4"-300CL
16	17089-613	1	EA	SPOOL FROM COOLER IC-2 OUTLET - TO SPOOL 614
17	17089-614	1	EA	SPOOL FROM SPOOL 613 - TO SPOOL 615
18	17089-615	1	EA	SPOOL FROM SPOOL 614 - TO SPOOL 616
19	17089-616	1	EA	SPOOL FROM SPOOL 615 - TO SPOOL 649
20	17089-617	1	EA	SPOOL FROM SECONDARY COOLER OUTLET - TO SPOOL 618
21	17089-618	1	EA	SPOOL FROM SPOOL 617 - TO SPOOL 619
22	17089-619	1	EA	SPOOL FROM SPOOL 618 - TO V-209 INLET
23	17089-649	1	EA	SPOOL FROM SPOOL 616 - TO SOUR GAS TO SCRUBBER
24	801249	8	EA	GASKET,FLEXITALLIC (GREY),8"-600CL
25	806687	48	EA	WASHER, LOCK, 1-1/8", GR8
26	805516	48	EA	CAPSCREW, HEX, 1-1/8-UNC x 5", GR8

NO.	DATE	REVISION	BY
A	10/10/14	ISSUED FOR APPROVAL	KMB
0	11/05/14	ISSUED FOR FABRICATION	KMB
1	12/30/14	ADDED STAGE #3 SUCTION PSV & CV-592	KMB
2	05/11/15	AS BUILT	KMB
3			

	5120 6th STREET NE. CALGARY, ALBERTA T2K 4W5 TEL: 403. 274.6106 FAX: 403. 730.1644 www.ngc-ital.com	DRAWN BY: KMB DATE: 10/10/14
		APPROVED BY: KDM DATE: 10/09/14
		JOB NO.: 17089-NC PART NO.: -
		TITLE: GENERAL ARRANGEMENT STAGE TWO
THIS DRAWING IS THE EXCLUSIVE PROPERTY OF NGC COMPRESSION SOLUTIONS LTD., AND CANNOT BE REPRODUCED OR DISTRIBUTED WITHOUT THE PERMISSION OF NGC COMPRESSION SOLUTIONS LTD.		END USER: STEEL REEF INFRASTRUCTURE CORP. PORTAL, SASKATCHEWAN - LSD: 01-09-001-04-W2M
SCALE: NTS	DWG. NO.: 17089-GA	SHEET 6 OF 10 REV 2



ITEM	PART #	QTY.	UOM	DESCRIPTION
1	17089-240	1	EA	STAGE 3 SUCTION BOTTLE, 16 OD x 16 S/S, 645 MAWP
2	17089-241	1	EA	STAGE 3 DISCHARGE BOTTLE, 14 OD x 39 S/S, 1287 MAWP
3	17089-239	1	EA	STAGE 3 SCRUBBER, 18 OD x 60 S/S, 645 MAWP
4	GROUP	3	EA	GSKT, 4"-300CL GREY, B7M STUD 3/4"x4-1/2", 2HM NUT
5	801229	1	EA	GASKET,FLEXITALLIC (GREY),4"-300CL
6	801947	8	EA	STUD, 3/4-10TPI x 4 1/2" LG, B7M
7	700706	16	EA	HEX, NUT, 3/4" 2HM
8	801229	2	EA	GASKET,FLEXITALLIC (GREY),4"-300CL
9	17089-620	1	EA	SPOOL FROM V-209 OUTLET - TO SPOOL 621
10	17089-621	1	EA	SPOOL FROM SPOOL 620 - TO V-210 INLET
11	17089-622	1	EA	SPOOL FROM V-211 OUTLET - TO SPOOL 623
12	17089-623	1	EA	SPOOL FROM SPOOL 622 - TO SPOOL 640
13	GROUP	4	EA	GSKT, 3"-600CL GREY, B7M STUD 3/4"x5", 2HM NUT
14	801224	1	EA	GASKET,FLEXITALLIC (GREY),3"-3/4/600CL
15	801948	8	EA	STUD, 3/4-10TPI x 5" LG, B7M
16	700706	16	EA	HEX, NUT, 3/4" 2HM
17	801224	1	EA	GASKET,FLEXITALLIC (GREY),3"-3/4/600CL
18	17089-640	1	EA	SPOOL FROM SPOOL 623 - TO COOLER AC INLET
19	805802	16	EA	CAPSCREW, HEX, 1-1/4-UNC x 5", GR8
20	802570	16	EA	WASHER, LOCK, 1-1/4", GR8

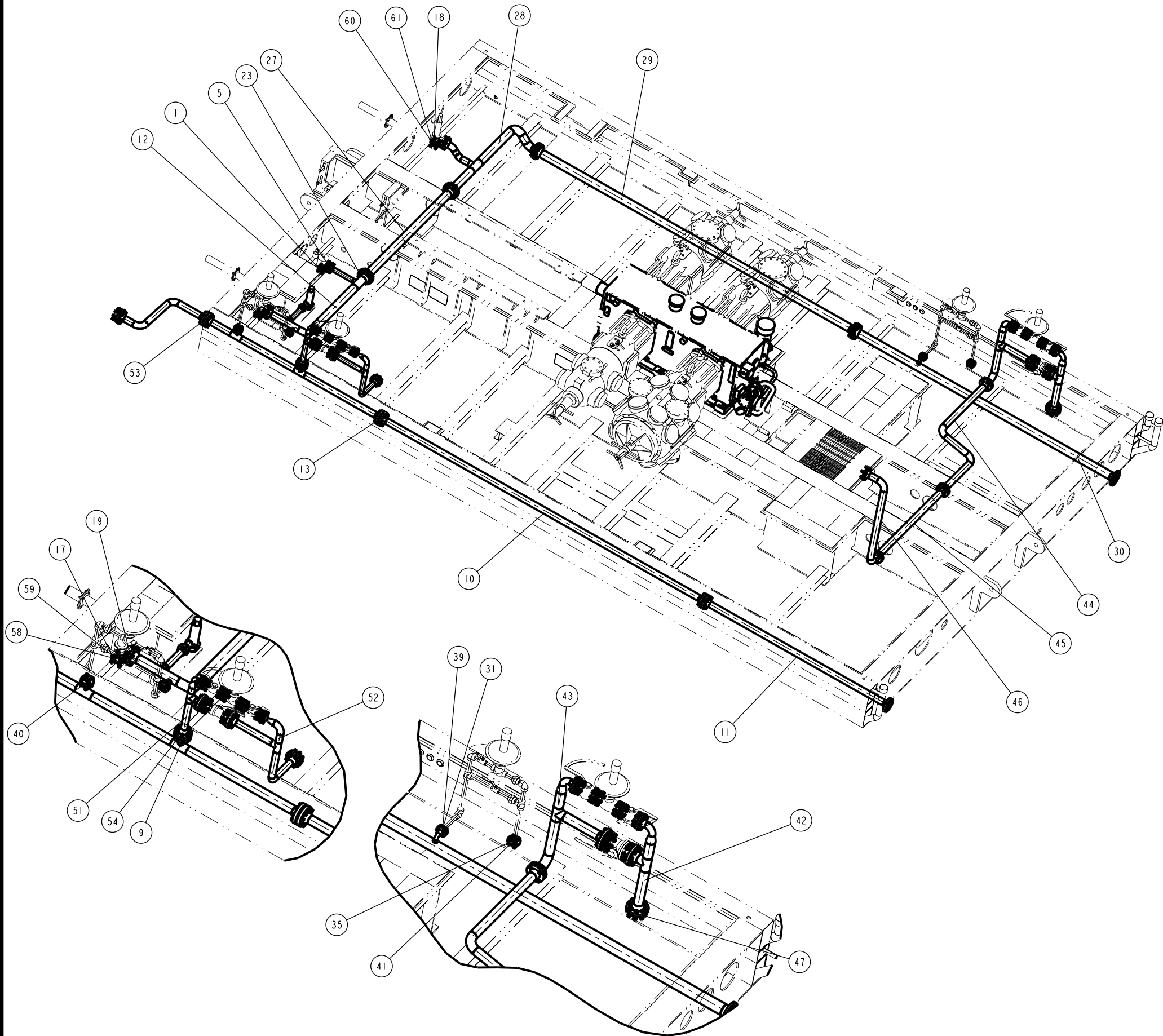
NO.	DATE	REVISION	BY
A	10/10/14	ISSUED FOR APPROVAL	KMB
0	11/05/14	ISSUED FOR FABRICATION	KMB
1	12/30/14	ADDED STAGE #3 SUCTION PSV & CV-592	KMB
2	05/11/15	AS BUILT	KMB
3			

NGC	5120 6th STREET NE. CALGARY, ALBERTA T2K 4W5	DRAWN BY: KMB	DATE: 10/10/14
	TEL: 403. 274.6106 FAX: 403. 730.1644 www.ngc-ital.com	APPROVED BY: KDM	DATE: 10/09/14
		JOB NO.: 17089-NC	PART NO.: -
		TITLE: GENERAL ARRANGEMENT STAGE THREE	
THIS DRAWING IS THE EXCLUSIVE PROPERTY OF NGC COMPRESSION SOLUTIONS LTD., AND CANNOT BE REPRODUCED OR DISTRIBUTED WITHOUT THE PERMISSION OF NGC COMPRESSION SOLUTIONS LTD.		END USER: STEEL REEF INFRASTRUCTURE CORP. PORTAL, SASKATCHEWAN - LSD: 01-09-001-04-W2M	SCALE: NTS
		DWG. NO. 17089-GA	SHEET 7 OF 10 REV 2

AS-BUILT


BY: _____

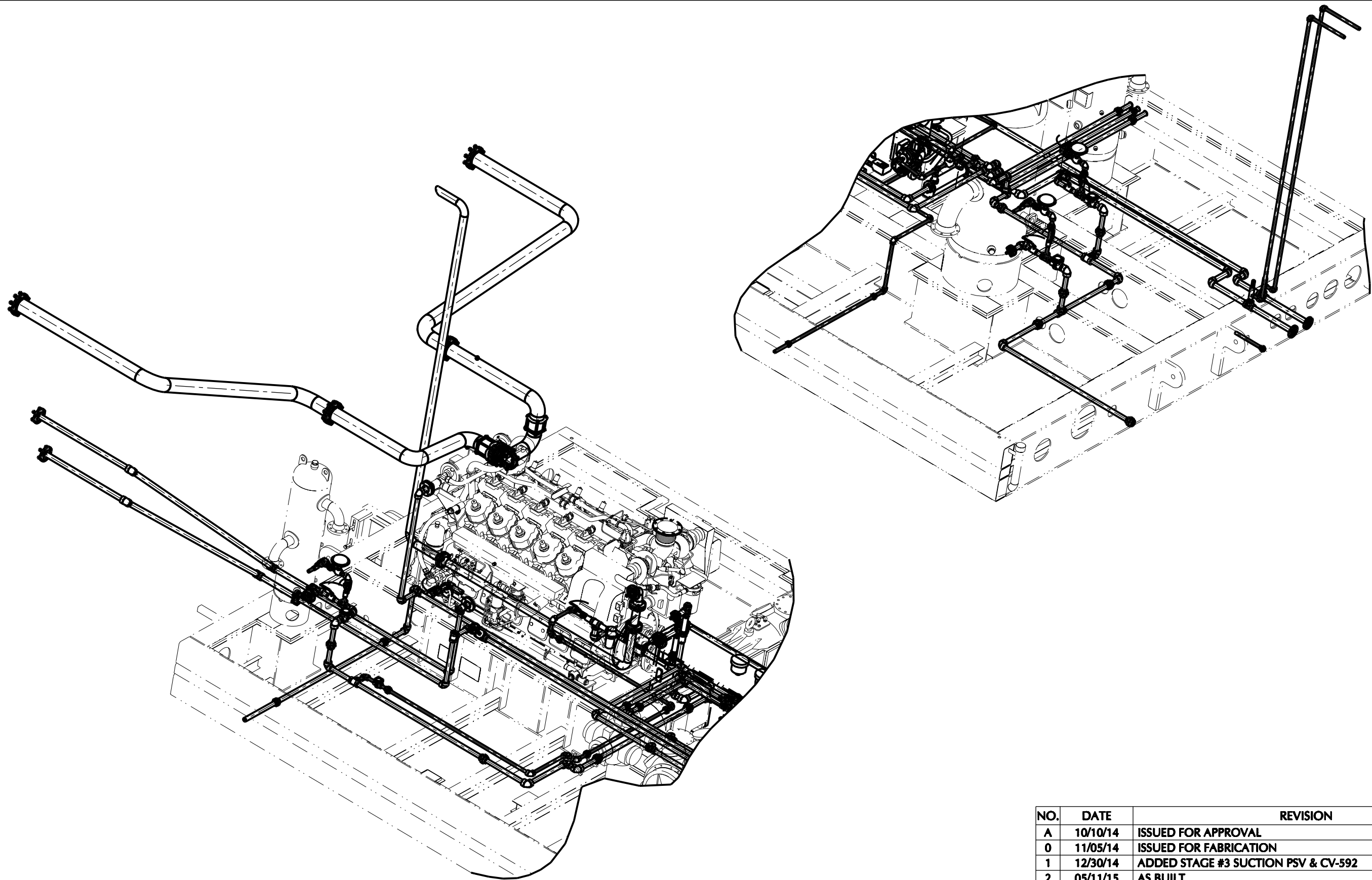
DATE: _____



ITEM	PART #	QTY.	UOM	DESCRIPTION
1	GROUP	6	EA	GSKT, 1"-600CL GREY, B7M STUD 5/8"x4", 2HM NUT
2	700698	1	EA	GASKET,FLEXITALLIC (GREY),1"-3/4/600CL
3	801939	4	EA	STUD, 5/8-11TPI x 4" LG, B7M
4	700695	8	EA	HEX, NUT, 5/8" 2HM
5	GROUP	6	EA	GSKT, 2"-300CL GREY, B7M STUD 5/8"x3-1/2", 2HM NUT
6	700786	1	EA	GASKET,FLEXITALLIC (GREY),2"-3/4/600CL
7	801938	8	EA	STUD, 5/8-11TPI x 3 1/2" LG, B7M
8	700695	16	EA	HEX, NUT, 5/8" 2HM
9	17089-624	1	EA	SPOOL FROM SPOOL 641 - TO SPOOL 625
10	17089-625	1	EA	SPOOL FROM SPOOL 624 - TO SPOOL 626
11	17089-626	1	EA	SPOOL FROM SPOOL 625 - TO FINAL DISCHARGE
12	17089-627	1	EA	SPOOL FROM PSV 520 & 540 - TO SPOOL 628
13	GROUP	4	EA	GSKT, 3"-600CL GREY, B7M STUD 3/4"x5", 2HM NUT
14	801224	1	EA	GASKET,FLEXITALLIC (GREY),3"-3/4/600CL
15	801948	8	EA	STUD, 3/4-10TPI x 5" LG, B7M
16	700706	16	EA	HEX, NUT, 3/4" 2HM
17	700722	1	EA	GASKET,FLEXITALLIC (GREY),2"-150CL
18	700707	1	EA	GASKET,FLEXITALLIC (GREY),1-1/2"-3/4/600CL
19	GROUP	6	EA	GSKT, 3"-150CL GREY, B7M STUD 5/8"x3-1/2", 2HM NUT
20	700785	1	EA	GASKET,FLEXITALLIC (GREY),3"-150CL
21	801938	4	EA	STUD, 5/8-11TPI x 3 1/2" LG, B7M
22	700695	8	EA	HEX, NUT, 5/8" 2HM
23	GROUP	4	EA	GSKT, 4"-150CL GREY, B7M STUD 5/8"x3-1/2", 2HM NUT
24	700723	1	EA	GASKET,FLEXITALLIC (GREY),4"-150CL
25	801938	8	EA	STUD, 5/8-11TPI x 3 1/2" LG, B7M
26	700695	16	EA	HEX, NUT, 5/8" 2HM
27	17089-628	1	EA	SPOOL FROM SPOOL 627 - TO SPOOL 629
28	17089-629	1	EA	SPOOL FROM SPOOL 628 - TO SPOOL 630
29	17089-630	1	EA	SPOOL FROM SPOOL 629 - TO SPOOL 631
30	17089-631	1	EA	SPOOL FROM SPOOL 630 - TO PSV HEADER SKID EDGE
31	GROUP	2	EA	GSKT, 1"-150CL GREY, B7M STUD 1/2"x2-1/2", 2HM NUT
32	700784	1	EA	GASKET,FLEXITALLIC (GREY),1"-150CL
33	802994	4	EA	STUD, 1/2-13TPI x 2 1/2" LG, B7M
34	700694	8	EA	HEX, NUT, 1/2" 2HM
35	GROUP	1	EA	GSKT, 1"-300CL GREY, B7M STUD 5/8"x3", 2HM NUT
36	700698	1	EA	GASKET,FLEXITALLIC (GREY),1"-3/4/600CL
37	803758	4	EA	STUD, 5/8-11TPI x 3" LG, B7M
38	700695	8	EA	HEX, NUT, 5/8" 2HM
39	700035	2	EA	FLANGE,RF THD,1-150CL
40	801156	1	EA	FLANGE,RF THD,1-600CL
41	700038	1	EA	FLANGE,RF THD,1-300CL
42	17076-632	1	EA	SPOOL FROM SPOOL 616 - TO SPOOL 633
43	17076-633	1	EA	SPOOL FROM SPOOL 632 - TO SPOOL 634
44	17076-634	1	EA	SPOOL FROM SPOOL 633 - TO SPOOL 635
45	17076-635	1	EA	SPOOL FROM SPOOL 634 - TO SPOOL 636
46	17076-636	1	EA	SPOOL FROM SPOOL 635 - TO V-201 BYPASS INLET
47	GROUP	3	EA	GSKT, 3"-300CL GREY, B7M STUD 3/4"x4-1/2", 2HM NUT
48	801224	1	EA	GASKET,FLEXITALLIC (GREY),3"-3/4/600CL
49	801947	8	EA	STUD, 3/4-10TPI x 4 1/2" LG, B7M
50	700706	16	EA	HEX, NUT, 3/4" 2HM
51	17089-637	1	EA	SPOOL FROM SPOOL 624 - TO SPOOL 638
52	17089-638	1	EA	SPOOL FROM SPOOL 637 - TO SPOOL 619
53	17089-641	1	EA	SPOOL FROM COOLER AC OUTLET - TO SPOOL 624
54	GROUP	3	EA	GSKT, 2"-600CL GREY, B7M STUD 5/8"x4-1/2", 2HM NUT
55	700786	1	EA	GASKET,FLEXITALLIC (GREY),2"-3/4/600CL
56	801940	8	EA	STUD, 5/8-11TPI x 4 1/2" LG, B7M
57	700695	16	EA	HEX, NUT, 5/8" 2HM
58	801939	4	EA	STUD, 5/8-11TPI x 4" LG, B7M
59	700695	8	EA	HEX, NUT, 5/8" 2HM
60	801947	4	EA	STUD, 3/4-10TPI x 4 1/2" LG, B7M
61	700706	8	EA	HEX, NUT, 3/4" 2HM

NO.	DATE	REVISION	BY
A	10/10/14	ISSUED FOR APPROVAL	KMB
0	11/05/14	ISSUED FOR FABRICATION	KMB
1	12/30/14	ADDED STAGE #3 SUCTION PSV & CV-592	KMB
2	05/11/15	AS BUILT	KMB
3			

	5120 6th STREET NE. CALGARY, ALBERTA T2K 4W5		DRAWN BY: KMB		DATE: 10/10/14	
	TEL: 403. 274.6106 FAX: 403. 730.1644 www.ngc-ital.com		APPROVED BY: KDM		DATE: 10/09/14	
			JOB NO.: 17089-NC		PART NO.: -	
	THIS DRAWING IS THE EXCLUSIVE PROPERTY OF NGC COMPRESSION SOLUTIONS LTD., AND CANNOT BE REPRODUCED OR DISTRIBUTED WITHOUT THE PERMISSION OF NGC COMPRESSION SOLUTIONS LTD.		TITLE:		GENERAL ARRANGEMENT FINAL DISCHARGE / PSV HEADER	
END USER:			STEEL REEF INFRASTRUCTURE CORP. PORTAL, SASKATCHEWAN - LSD: 01-09-001-04-W2M			
SCALE			DWG. NO.	SHEET 8 OF 10	REV	
NTS			17089-GA		2	




AS-BUILT

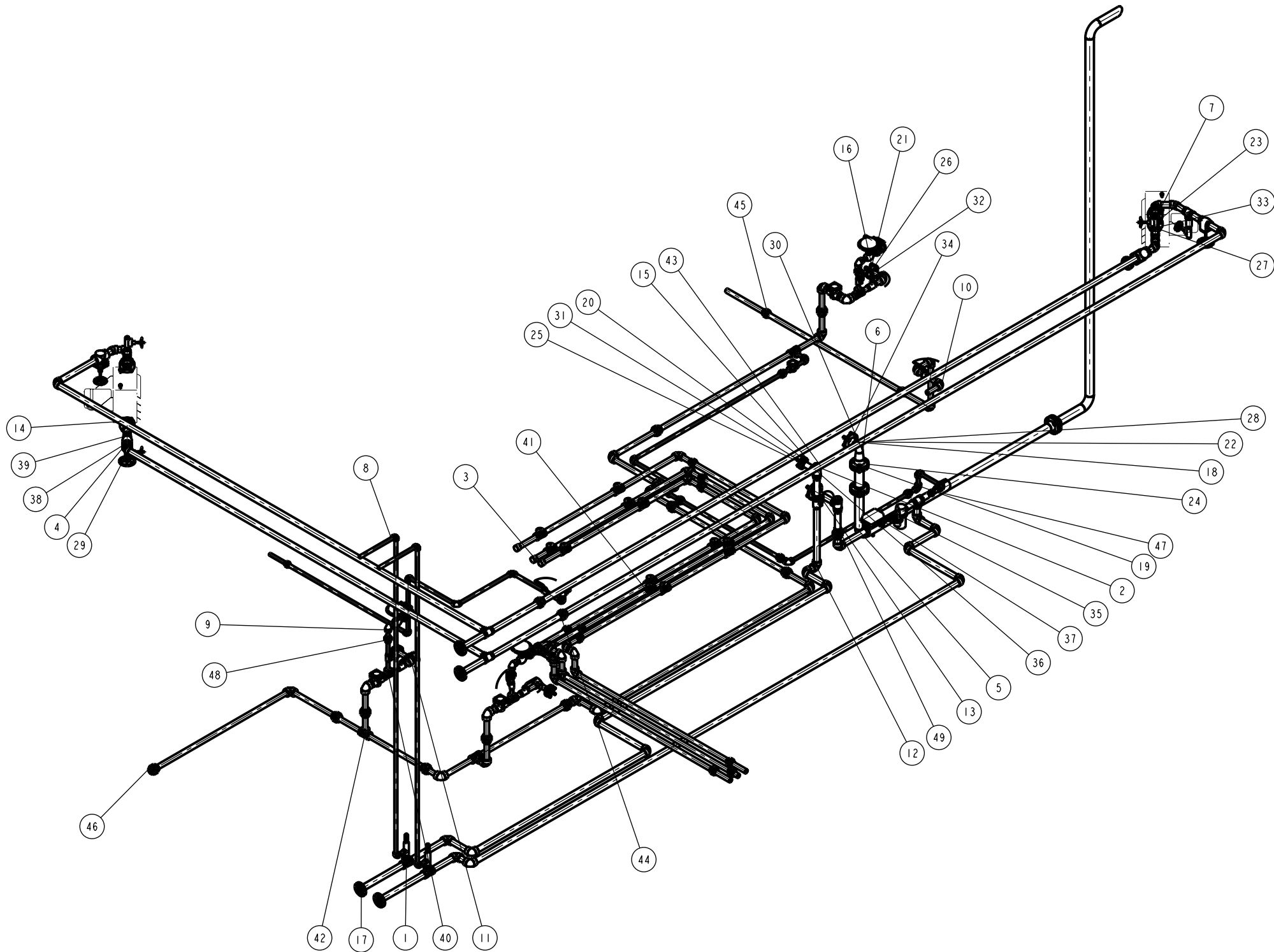
BY: _____

DATE: _____

NO.	DATE	REVISION	BY
A	10/10/14	ISSUED FOR APPROVAL	KMB
0	11/05/14	ISSUED FOR FABRICATION	KMB
1	12/30/14	ADDED STAGE #3 SUCTION PSV & CV-592	KMB
2	05/11/15	AS BUILT	KMB
3			

 <div>5120 6th STREET N.E. CALGARY, ALBERTA T2K 4W5 TEL: 403. 274.6106 FAX: 403. 730.1644 www.ngc-ltd.com</div>	DRAWN BY:	KMB	DATE:	10/10/14	
	APPROVED BY:	KDM	DATE:	10/09/14	
	JOB NO.:	17089-NC	PART NO.:	-	
	TITLE: GENERAL ARRANGEMENT ENGINE/COMP/SCRUBBER UTILITIES LAYOUT				
	END USER: STEEL REEF INFRASTRUCTURE CORP. PORTAL, SASKATCHEWAN - LSD: 01-09-001-04-W2M				
SCALE		DWG. NO.		SHEET 9 OF 10	REV
NTS		17089-GA			2

THIS DRAWING IS THE EXCLUSIVE PROPERTY OF NGC COMPRESSION SOLUTIONS LTD., AND CANNOT BE REPRODUCED OR DISTRIBUTED WITHOUT THE PERMISSION OF NGC COMPRESSION SOLUTIONS LTD.




BILL OF MATERIALS					
ITEM	QTY.	PART #	DESCRIPTION	MATERIAL	COMMENTS
1	2	800027	BUSHING, REDUCING HEX, 2" x 1"-3000/6000CL	SA105N	
2	2	800026	BUSHING, REDUCING HEX, 2" x 3/4"-3000/6000CL	SA105N	
3	3	700003	CAP, THD, 1-1/2"-3000CL	SA105N	
4	4	807200	ELBOW, 45 SW, 2-3000CL	SA105N	
5	3	800348	ELBOW, 90 LR, 3", STD	SA234-WPB	
6	1	800398	ELBOW, 90 SR, 2-1/2", STD	SA234-WPB	
7	4	805424	ELBOW, 90 SW, 2-3000CL	SA105N	
8	10	700027	ELBOW, 90 THD, 1"-3000CL	SA105N	
9	15	800450	ELBOW, 90 THD, 1"-6000CL	SA105N	
10	19	700028	ELBOW, 90 THD, 1-1/2"-3000CL	SA105N	
11	16	800452	ELBOW, 90 THD, 1-1/2"-6000CL	SA105N	
12	14	700029	ELBOW, 90 THD, 2-3000CL	SA105N	
13	1	806158	FLANGE,RF RED THD,3-150CL x 2 NPT	SA105N	
14	6	805307	FLANGE,RF SW,2-150CL XH	SA105N	
15	3	700036	FLANGE,RF THD,1-1/2-150CL	SA105N	
16	1	801139	FLANGE,RF THD,1-1/2-300CL	SA105N	
17	6	700037	FLANGE,RF THD,2-150CL	SA105N	
18	1	800467	FLANGE,RF WN,2-1/2-150CL STD	SA105N	
19	4	800468	FLANGE,RF WN,3-150CL STD	SA105N	
20	3	700697	GASKET,FLEXITALLIC (GREY),1-1/2"-150CL	316L/FLEXICARB	
21	1	700707	GASKET,FLEXITALLIC (GREY),1-1/2"-3/4/600CL	316L/FLEXICARB	
22	1	700789	GASKET,FLEXITALLIC (GREY),2-1/2"-150CL	316L/FLEXICARB	
23	4	700722	GASKET,FLEXITALLIC (GREY),2"-150CL	316L/FLEXICARB	
24	4	700785	GASKET,FLEXITALLIC (GREY),3"-150CL	316L/FLEXICARB	
25	24	700694	HEX, NUT, 1/2" 2HM	2HM	
26	8	700706	HEX, NUT, 3/4" 2HM	2HM	
27	32	700132	HEX, NUT, 5/8" 2H	2H	
28	40	700695	HEX, NUT, 5/8" 2HM	2HM	
29	4	700140	PLUG, THD HEX, 1"-3000/6000CL	SA105N	
30	1	801681	REDUCER,CONC. BW,3" x 2-1/2",STD	SA234-WPB	
31	12	803756	STUD, 1/2-13TPI x 3" LG, B7M	B7M	
32	4	802995	STUD, 3/4-10TPI x 3 1/2" LG, B7M	B7M	
33	16	700147	STUD, 5/8-11TPI x 3 1/2" LG, B7	B7	
34	20	801938	STUD, 5/8-11TPI x 3 1/2" LG, B7M	B7M	
35	1	700165	SWAGE NIPPLE, CONC., 1- 1/2" x 1"	SA105N	
36	2	700168	SWAGE NIPPLE, CONC., 2" x 1-1/2"	SA105N	
37	2	700787	SWAGE NIPPLE, CONC., 2" x 1"	SA105N	
38	4	807201	SWAGE NIPPLE, CONC.PLE/TSE, 2" x 1"	SA105N	
39	6	805956	TEE, SW, 2"-3000CL	SA105N	
40	4	700185	TEE, THD, 1-1/2" x 1"-3000CL	SA105N	
41	12	700186	TEE, THD, 1-1/2" x 1/2"-3000CL	SA105N	
42	2	802421	TEE, THD, 1-1/2"-6000CL	SA105N	
43	5	700187	TEE, THD, 2"-3000CL	SA105N	
44	2	805957	UNION, SW, 2"-3000CL	SA105N	
45	11	700191	UNION, THD, 1-1/2"-3000CL	SA105	
46	10	802442	UNION, THD, 1-1/2"-6000CL	SA105	
47	3	700190	UNION, THD, 1"-3000CL	SA105	
48	10	802440	UNION, THD, 1"-6000CL	SA105	
49	1	700192	UNION, THD, 2"-3000CL	SA105	

AS-BUILT

BY: _____

DATE: _____

NO.	DATE	REVISION	BY
A	10/10/14	ISSUED FOR APPROVAL	KMB
0	11/05/14	ISSUED FOR FABRICATION	KMB
1	12/30/14	ADDED STAGE #3 SUCTION PSV & CV-592	KMB
2	05/11/15	AS BUILT	KMB
3			

	5120 6th STREET NE. CALGARY, ALBERTA T2K 4W5	DRAWN BY: KMB	DATE: 10/10/14
	TEL: 403. 274.6106 FAX: 403. 730.1644 www.ngc-ital.com	APPROVED BY: KDM	DATE: 10/09/14
		JOB NO.: 17089-NC	PART NO.: -
		TITLE: GENERAL ARRANGEMENT (UTILITIES MATERIALS)	
END USER: STEEL REEF INFRASTRUCTURE CORP. PORTAL, SASKATCHEWAN - LSD_DRW:1		SCALE: NTS	REV: 2

THIS DRAWING IS THE EXCLUSIVE PROPERTY OF
NGC COMPRESSION SOLUTIONS LTD., AND CANNOT BE
REPRODUCED OR DISTRIBUTED WITHOUT THE
PERMISSION OF NGC COMPRESSION SOLUTIONS LTD.

SHEET 10 OF 10